

Datasheet for ABIN2783686
anti-METTL11B antibody (C-Term)[Go to Product page](#)

2 Images

Overview

Quantity:	100 µL
Target:	METTL11B (C10RF184)
Binding Specificity:	C-Term
Reactivity:	Mouse, Human, Dog, Horse, Guinea Pig, Pig, Rabbit, Rat, Cow
Host:	Rabbit
Clonality:	Polyclonal
Conjugate:	This METTL11B antibody is un-conjugated
Application:	Western Blotting (WB)

Product Details

Immunogen:	The immunogen is a synthetic peptide directed towards the C terminal region of human C1orf184
Sequence:	NVAREGCILD LSDSSVTRDM DILRSLIRKS GLVVLGQEKQ DGFPEQCIPV
Predicted Reactivity:	Cow: 93%, Dog: 100%, Guinea Pig: 85%, Horse: 100%, Human: 100%, Mouse: 93%, Pig: 86%, Rabbit: 93%, Rat: 93%
Characteristics:	This is a rabbit polyclonal antibody against C1orf184. It was validated on Western Blot using a cell lysate as a positive control.
Purification:	Affinity Purified

Target Details

Target:	METTL11B (C10RF184)
---------	---------------------

Target Details

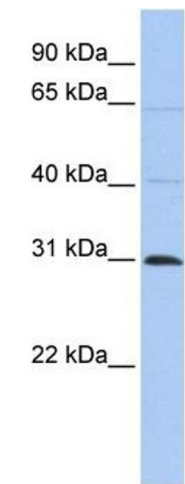
Alternative Name:	C1orf184 (C1ORF184 Products)
Background:	The exact function of C1orf184 remains unknown. Alias Symbols: NTM1B, C1orf184 Protein Size: 281
Molecular Weight:	32 kDa
Gene ID:	149281
NCBI Accession:	XM_089281 , XP_089281
UniProt:	Q5VYY1

Application Details

Application Notes:	Optimal working dilutions should be determined experimentally by the investigator.
Comment:	Antigen size: 281 AA
Restrictions:	For Research Use only

Handling

Format:	Liquid
Concentration:	Lot specific
Buffer:	Liquid. Purified antibody supplied in 1x PBS buffer with 0.09 % (w/v) sodium azide and 2 % sucrose.
Preservative:	Sodium azide
Precaution of Use:	This product contains Sodium azide: a POISONOUS AND HAZARDOUS SUBSTANCE which should be handled by trained staff only.
Handling Advice:	Avoid repeated freeze-thaw cycles.
Storage:	-20 °C
Storage Comment:	For short term use, store at 2-8°C up to 1 week. For long term storage, store at -20°C in small aliquots to prevent freeze-thaw cycles.



Western Blotting

Image 1. WB Suggested Anti-C1orf184 Antibody Titration:
0.2-1 ug/ml Positive Control: HepG2 cell lysate



Western Blotting

Image 2. WB Suggested Anti-C1orf184 antibody Titration: 1
ug/mL Sample Type: Human HepG2