

Datasheet for ABIN2783689
anti-LIPT2 antibody (C-Term)[Go to Product page](#)

1 Image

Overview

Quantity:	100 µL
Target:	LIPT2
Binding Specificity:	C-Term
Reactivity:	Human, Guinea Pig, Cow, Dog, Horse, Mouse, Rabbit, Rat, Zebrafish (Danio rerio)
Host:	Rabbit
Clonality:	Polyclonal
Conjugate:	This LIPT2 antibody is un-conjugated
Application:	Western Blotting (WB)

Product Details

Immunogen:	The immunogen is a synthetic peptide directed towards the C-terminal region of Human LIPT2
Sequence:	TDLTWFEHIV PCGLVGTGVT SLSKELQRHV TVEEVMPPFL VAFKEIYKCT
Predicted Reactivity:	Cow: 93%, Dog: 93%, Guinea Pig: 100%, Horse: 93%, Human: 100%, Mouse: 100%, Rabbit: 93%, Rat: 100%, Zebrafish: 79%
Characteristics:	This is a rabbit polyclonal antibody against LIPT2. It was validated on Western Blot.
Purification:	Affinity Purified

Target Details

Target:	LIPT2
Alternative Name:	LIPT2 (LIPT2 Products)

Target Details

Background:	LIPT2 catalyzes the transfer of endogenously produced octanoic acid from octanoyl-acyl-carrier-protein onto the lipoyl domains of lipoate-dependent enzymes. Lipoyl-ACP can also act as a substrate although octanoyl-ACP is likely to be the physiological substrate. Alias Symbols: - Protein Size: 231
-------------	---

Molecular Weight:	25 kDa
-------------------	--------

Gene ID:	387787
----------	--------

NCBI Accession:	NM_001144869 , NP_001138341
-----------------	---

UniProt:	A6NK58
----------	------------------------

Application Details

Restrictions:	For Research Use only
---------------	-----------------------

Handling

Format:	Liquid
---------	--------

Concentration:	1 mg/mL
----------------	---------

Buffer:	Liquid. Purified antibody supplied in 1x PBS buffer with 0.09 % (w/v) sodium azide and 2 % sucrose.
---------	---

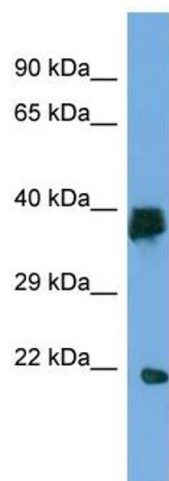
Preservative:	Sodium azide
---------------	--------------

Precaution of Use:	This product contains Sodium azide: a POISONOUS AND HAZARDOUS SUBSTANCE which should be handled by trained staff only.
--------------------	--

Handling Advice:	Avoid repeat freeze-thaw cycles.
------------------	----------------------------------

Storage:	-20 °C
----------	--------

Storage Comment:	For short term use, store at 2-8°C up to 1 week. For long term storage, store at -20°C in small aliquots to prevent freeze-thaw cycles.
------------------	---



Western Blotting

Image 1. Host: Rabbit Target Name: LIPT2 Sample Type: Placenta lysates Antibody Dilution: 1.0ug/ml