



[Go to Product page](#)

Datasheet for ABIN2783711

anti-LRRC59 antibody (N-Term)

3 Images

1 Publication

Overview

Quantity:	100 µL
Target:	LRRC59
Binding Specificity:	N-Term
Reactivity:	Human, Mouse, Rat, Dog, Rabbit, Cow, Guinea Pig
Host:	Rabbit
Clonality:	Polyclonal
Conjugate:	This LRRC59 antibody is un-conjugated
Application:	Western Blotting (WB), Immunohistochemistry (IHC)

Product Details

Immunogen:	The immunogen is a synthetic peptide directed towards the N terminal region of human LRRC59
Sequence:	TKAGSKGGNL RDKLDGNELD LSLSDLNEVP VKELAALPKA TILDLSCKNL
Predicted Reactivity:	Cow: 100%, Dog: 100%, Guinea Pig: 100%, Human: 100%, Mouse: 100%, Rabbit: 93%, Rat: 100%
Characteristics:	This is a rabbit polyclonal antibody against LRRC59. It was validated on Western Blot using a cell lysate as a positive control.
Purification:	Affinity Purified

Target Details

Target:	LRRC59
---------	--------

Target Details

Alternative Name:	LRRC59 (LRRC59 Products)
Background:	The exact function of LRRC59 remains unknown. Alias Symbols: FLJ21675, PR01855 Protein Interaction Partner: UBC, STAU1, MDM2, LMNA, UBL4A, MTNR1A, ITGA4, FN1, CSNK2A1, ILF3, APP, CAND1, YWHAZ, HDGF, MYC, USP20, SGOL1, Rrp1b, MPG, Protein Size: 307
Molecular Weight:	35 kDa
Gene ID:	55379
NCBI Accession:	NM_018509 , NP_060979
UniProt:	Q5RJR8

Application Details

Application Notes:	Optimal working dilutions should be determined experimentally by the investigator.
Comment:	Antigen size: 307 AA
Restrictions:	For Research Use only

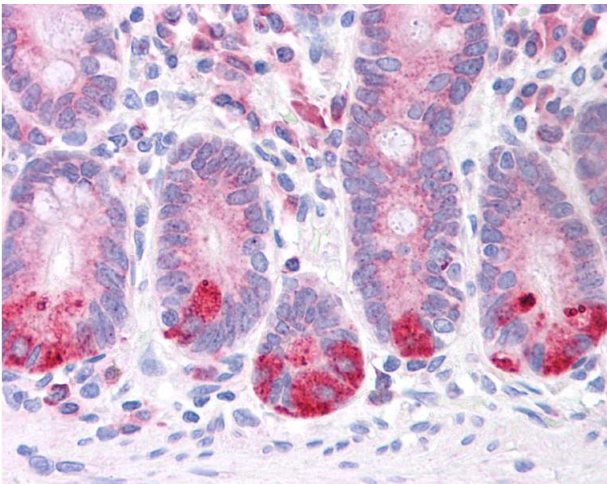
Handling

Format:	Liquid
Concentration:	Lot specific
Buffer:	Liquid. Purified antibody supplied in 1x PBS buffer with 0.09 % (w/v) sodium azide and 2 % sucrose.
Preservative:	Sodium azide
Precaution of Use:	This product contains Sodium azide: a POISONOUS AND HAZARDOUS SUBSTANCE which should be handled by trained staff only.
Handling Advice:	Avoid repeated freeze-thaw cycles.
Storage:	-20 °C
Storage Comment:	For short term use, store at 2-8°C up to 1 week. For long term storage, store at -20°C in small aliquots to prevent freeze-thaw cycles.

Publications

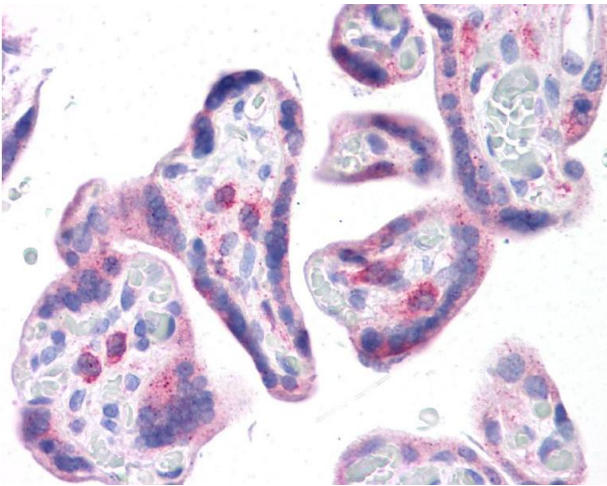
Product cited in: Gerhard, Wagner, Feingold, Shenmen, Grouse, Schuler, Klein, Old, Rasooly, Good, Guyer, Peck, Derge, Lipman, Collins, Jang, Sherry, Feolo, Misquitta, Lee, Rotmistrovsky, Greenhut, Schaefer, Buetow et al.: "The status, quality, and expansion of the NIH full-length cDNA project: the Mammalian Gene Collection (MGC). ..." in: **Genome research**, Vol. 14, Issue 10B, pp. 2121-7, (2004) ([PubMed](#)).

Images



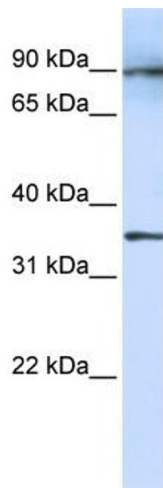
Immunohistochemistry

Image 1.



Immunohistochemistry

Image 2.



Western Blotting

Image 3. WB Suggested Anti-LRRC59 Antibody Titration: 1 ug/ml Positive Control: Fetal Lung cell lysate