

Datasheet for ABIN2783713 anti-SMPD3 antibody (Middle Region)



[Go to Product page](#)

2 Images

1 Publication

Overview

Quantity:	100 µL
Target:	SMPD3
Binding Specificity:	Middle Region
Reactivity:	Human, Mouse, Rat, Rabbit, Cow, Dog, Guinea Pig, Horse
Host:	Rabbit
Clonality:	Polyclonal
Conjugate:	This SMPD3 antibody is un-conjugated
Application:	Western Blotting (WB)

Product Details

Immunogen:	The immunogen is a synthetic peptide directed towards the middle region of human SMPD3
Sequence:	RPPEADDPVP GGQARNGAGG GPRGQTPNHN QQDGDGSGSLG SPSASRESLV
Predicted Reactivity:	Cow: 100%, Dog: 100%, Guinea Pig: 100%, Horse: 93%, Human: 100%, Mouse: 100%, Rabbit: 100%, Rat: 100%
Characteristics:	This is a rabbit polyclonal antibody against SMPD3. It was validated on Western Blot using a cell lysate as a positive control.
Purification:	Affinity Purified

Target Details

Target:	SMPD3
---------	-------

Target Details

Alternative Name:	SMPD3 (SMPD3 Products)
Background:	<p>SMPD3 catalyzes the hydrolysis of sphingomyelin to form ceramide and phosphocholine. Ceramide mediates numerous cellular functions, such as apoptosis and growth arrest, and is capable of regulating these 2 cellular events independently. Also hydrolyzes sphingosylphosphocholine. SMPD3 regulates the cell cycle by acting as a growth suppressor in confluent cells. It probably acts as a regulator of postnatal development and participates in bone and dentin mineralization.</p> <p>Alias Symbols: FLJ22593, MGC138443, NSMASE2</p> <p>Protein Size: 655</p>
Molecular Weight:	71 kDa
Gene ID:	55512
NCBI Accession:	NM_018667 , NP_061137
UniProt:	Q9NY59
Pathways:	Hormone Transport

Application Details

Application Notes:	Optimal working dilutions should be determined experimentally by the investigator.
Comment:	Antigen size: 655 AA
Restrictions:	For Research Use only

Handling

Format:	Liquid
Concentration:	Lot specific
Buffer:	Liquid. Purified antibody supplied in 1x PBS buffer with 0.09 % (w/v) sodium azide and 2 % sucrose.
Preservative:	Sodium azide
Precaution of Use:	This product contains Sodium azide: a POISONOUS AND HAZARDOUS SUBSTANCE which should be handled by trained staff only.
Handling Advice:	Avoid repeated freeze-thaw cycles.
Storage:	-20 °C

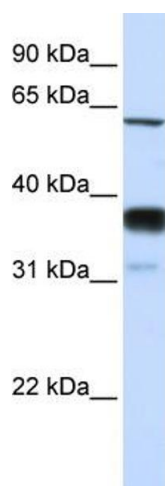
Handling

Storage Comment: For short term use, store at 2-8°C up to 1 week. For long term storage, store at -20°C in small aliquots to prevent freeze-thaw cycles.

Publications

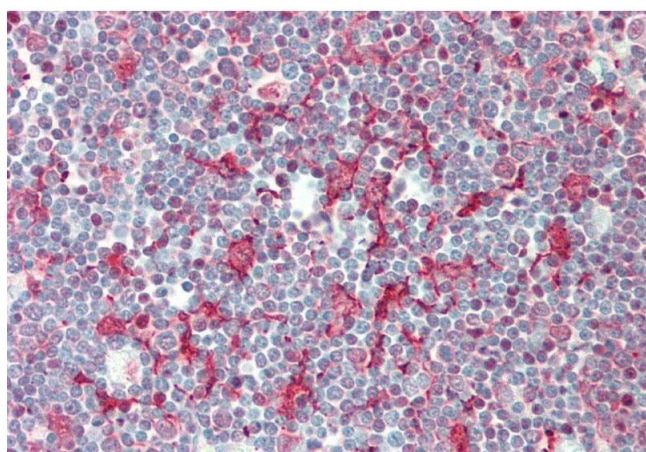
Product cited in: Clayton, Daley, MacDonald, Fernandez-Vizarra, Bottegoni, O'Neil, Major, Griffin, Zhuang, Adewoye, Woolcock, Jones, Goodyear, Elmesmari, Filer, Tennant, Alivernini, Buckley, Pitceathly et al.: "Inflammation causes remodeling of mitochondrial cytochrome c oxidase mediated by the bifunctional gene C15orf48. ..." in: **Science advances**, Vol. 7, Issue 50, pp. eabl5182, (2021) ([PubMed](#)).

Images



Western Blotting

Image 1. WB Suggested Anti-SMPD3 Antibody Titration: 0.2-1 ug/ml ELISA Titer: 1:12500 Positive Control: Human Lung



Immunohistochemistry

Image 2. Rabbit Anti-SMPD3 antibody Formalin Fixed Paraffin Embedded Tissue: Human Thymus Primary antibody Concentration: 1:100 Secondary Antibody: Donkey anti-Rabbit-Cy3 Secondary Antibody Concentration: 1:200 Magnification: 20x Exposure Time: 0.5-2.0sec