

Datasheet for ABIN2783715
anti-SULF2 antibody (C-Term)[Go to Product page](#)

3 Images

1 Publication

Overview

Quantity:	100 µL
Target:	SULF2
Binding Specificity:	C-Term
Reactivity:	Human, Mouse, Rat, Rabbit, Cow, Dog, Horse, Pig
Host:	Rabbit
Clonality:	Polyclonal
Conjugate:	This SULF2 antibody is un-conjugated
Application:	Western Blotting (WB), Immunohistochemistry (IHC)

Product Details

Immunogen:	The immunogen is a synthetic peptide directed towards the C terminal region of human SULF2
Sequence:	DVLNQLHVQL MELRSCKGYK QCNPRTRNMD LGLKDGGSYE QYRQFQRRKW
Predicted Reactivity:	Cow: 79%, Dog: 100%, Horse: 100%, Human: 100%, Mouse: 93%, Pig: 93%, Rabbit: 100%, Rat: 100%
Characteristics:	This is a rabbit polyclonal antibody against SULF2. It was validated on Western Blot and immunohistochemistry.
Purification:	Protein A purified

Target Details

Target:	SULF2
---------	-------

Target Details

Alternative Name:	SULF2 (SULF2 Products)
Background:	<p>Heparan sulfate proteoglycans (HSPGs) act as coreceptors for numerous heparin-binding growth factors and cytokines and are involved in cell signaling. Heparan sulfate 6-O-endosulfatases, such as SULF2, selectively remove 6-O-sulfate groups from heparan sulfate. This activity modulates the effects of heparan sulfate by altering binding sites for signaling molecules. Heparan sulfate proteoglycans (HSPGs) act as coreceptors for numerous heparin-binding growth factors and cytokines and are involved in cell signaling. Heparan sulfate 6-O-endosulfatases, such as SULF2, selectively remove 6-O-sulfate groups from heparan sulfate. This activity modulates the effects of heparan sulfate by altering binding sites for signaling molecules (Dai et al., 2005 [PubMed 16192265]).[supplied by OMIM].</p> <p>Alias Symbols: DKFZp313E091, FLJ90554, HSULF-2, KIAA1247, MGC126411</p> <p>Protein Interaction Partner: MYC, UBC,</p> <p>Protein Size: 870</p>
Molecular Weight:	98 kDa
Gene ID:	55959
NCBI Accession:	NM_018837 , NP_061325
UniProt:	Q8IWU5

Application Details

Application Notes:	Optimal working dilutions should be determined experimentally by the investigator.
Comment:	Antigen size: 870 AA
Restrictions:	For Research Use only

Handling

Format:	Liquid
Concentration:	Lot specific
Buffer:	Liquid. Purified antibody supplied in 1x PBS buffer with 0.09 % (w/v) sodium azide and 2 % sucrose.
Preservative:	Sodium azide
Precaution of Use:	This product contains Sodium azide: a POISONOUS AND HAZARDOUS SUBSTANCE which should be handled by trained staff only.

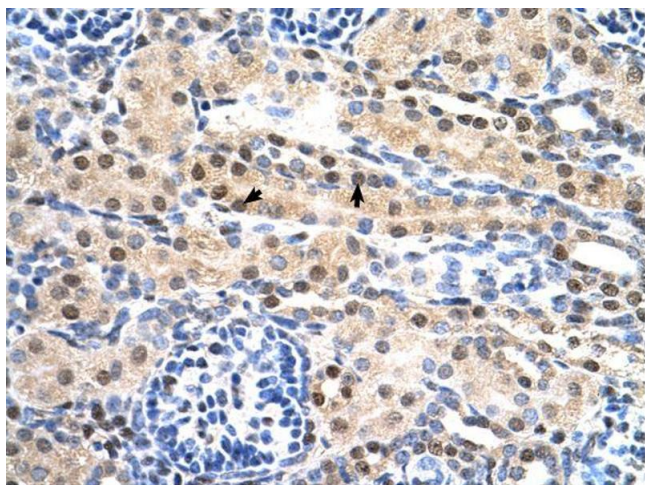
Handling

Handling Advice:	Avoid repeated freeze-thaw cycles.
Storage:	-20 °C
Storage Comment:	For short term use, store at 2-8°C up to 1 week. For long term storage, store at -20°C in small aliquots to prevent freeze-thaw cycles.

Publications

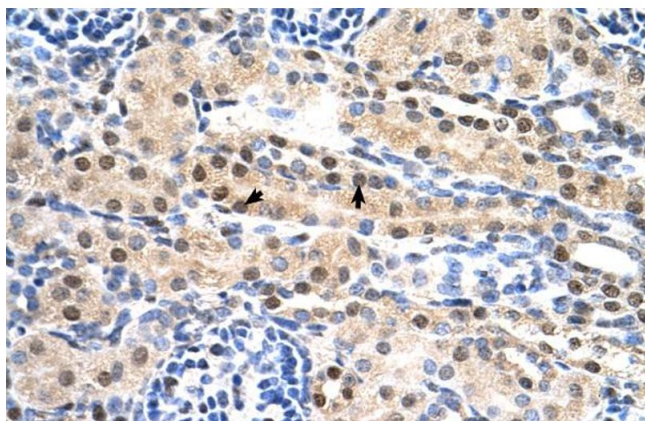
Product cited in: Mehrle, Rosenfelder, Schupp, del Val, Arlt, Hahne, Bechtel, Simpson, Hofmann, Hide, Glatting, Huber, Pepperkok, Poustka, Wiemann: "The LIFEdb database in 2006." in: **Nucleic acids research**, Vol. 34, Issue Database issue, pp. D415-8, (2005) ([PubMed](#)).

Images



Immunohistochemistry

Image 1.



Immunohistochemistry

Image 2. Human kidney



Western Blotting

Image 3. WB Suggested Anti-SULF2 Antibody Titration:
1.25ug/ml Positive Control: HepG2 cell lysate