

Datasheet for ABIN2783722

anti-PCDHA4 antibody (N-Term)[Go to Product page](#)**1** Image

Overview

Quantity:	100 µL
Target:	PCDHA4
Binding Specificity:	N-Term
Reactivity:	Human, Guinea Pig, Rat, Dog, Horse, Mouse, Cow, Rabbit
Host:	Rabbit
Clonality:	Polyclonal
Conjugate:	This PCDHA4 antibody is un-conjugated
Application:	Western Blotting (WB)

Product Details

Immunogen:	The immunogen is a synthetic peptide directed towards the N terminal region of human PCDHA4
Sequence:	VDRPLQVFHV DVEVRDINDN PPVFPATQKN LSIAESRPLD SRFPLEGASD
Predicted Reactivity:	Cow: 100%, Dog: 100%, Guinea Pig: 100%, Horse: 100%, Human: 100%, Mouse: 100%, Rabbit: 100%, Rat: 100%
Characteristics:	This is a rabbit polyclonal antibody against PCDHA4. It was validated on Western Blot using a cell lysate as a positive control.
Purification:	Affinity Purified

Target Details

Target:	PCDHA4
---------	--------

Target Details

Alternative Name:	PCDHA4 (PCDHA4 Products)
Background:	<p>The gene encoding PCDHA4 is a member of the protocadherin alpha gene cluster, one of three related gene clusters tandemly linked on chromosome five that demonstrate an unusual genomic organization similar to that of B-cell and T-cell receptor gene clusters. The alpha gene cluster is composed of 15 cadherin superfamily genes related to the mouse CNR genes and consists of 13 highly similar and 2 more distantly related coding sequences. PCDHA4 is a single-pass type I membrane protein. It contains 6 cadherin domains. PCDHA4 is a potential calcium-dependent cell-adhesion protein. It may be involved in the establishment and maintenance of specific neuronal connections in the brain. This gene is a member of the protocadherin alpha gene cluster, one of three related gene clusters tandemly linked on chromosome five that demonstrate an unusual genomic organization similar to that of B-cell and T-cell receptor gene clusters. The alpha gene cluster is composed of 15 cadherin superfamily genes related to the mouse CNR genes and consists of 13 highly similar and 2 more distantly related coding sequences. The tandem array of 15 N-terminal exons, or variable exons, are followed by downstream C-terminal exons, or constant exons, which are shared by all genes in the cluster. The large, uninterrupted N-terminal exons each encode six cadherin ectodomains while the C-terminal exons encode the cytoplasmic domain. These neural cadherin-like cell adhesion proteins are integral plasma membrane proteins that most likely play a critical role in the establishment and function of specific cell-cell connections in the brain. Alternative splicing has been observed and additional variants have been suggested but their full-length nature has yet to be determined.</p> <p>Alias Symbols: CNR1, CNRN1, CRNR1, MGC138307, MGC142169, PCDH-ALPHA4</p> <p>Protein Interaction Partner: SGTA, LRIF1, CCDC90B, RBM48, IGSF21, SETDB1, C14orf1, UNC119, GDF9, RELN, TLE1, TP53, GAPDH, EEF1A1, APLP1,</p> <p>Protein Size: 947</p>

Molecular Weight:	99 kDa
Gene ID:	56144
NCBI Accession:	NM_018907 , NP_061730
UniProt:	Q9UN74

Application Details

Application Notes:	Optimal working dilutions should be determined experimentally by the investigator.
Comment:	Antigen size: 947 AA

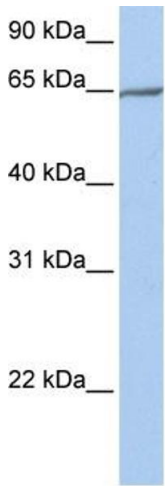
Application Details

Restrictions:	For Research Use only
---------------	-----------------------

Handling

Format:	Liquid
Concentration:	Lot specific
Buffer:	Liquid. Purified antibody supplied in 1x PBS buffer with 0.09 % (w/v) sodium azide and 2 % sucrose.
Preservative:	Sodium azide
Precaution of Use:	This product contains Sodium azide: a POISONOUS AND HAZARDOUS SUBSTANCE which should be handled by trained staff only.
Handling Advice:	Avoid repeated freeze-thaw cycles.
Storage:	-20 °C
Storage Comment:	For short term use, store at 2-8°C up to 1 week. For long term storage, store at -20°C in small aliquots to prevent freeze-thaw cycles.

Images



Western Blotting

Image 1. WB Suggested Anti-PCDHA4 Antibody Titration:
0.2-1 ug/ml Positive Control: 721_B cell lysate