

Datasheet for ABIN2783724

**anti-Protocadherin gamma Subfamily A, 4 (PCDHGA4) (N-Term) antibody**[Go to Product page](#)**1** Image

## Overview

Quantity:	100 µL
Target:	Protocadherin gamma Subfamily A, 4 (PCDHGA4)
Binding Specificity:	N-Term
Reactivity:	Human, Mouse, Rat, Cow, Dog, Guinea Pig, Horse, Zebrafish (Danio rerio)
Host:	Rabbit
Clonality:	Polyclonal
Conjugate:	Un-conjugated
Application:	Western Blotting (WB)

## Product Details

Immunogen:	The immunogen is a synthetic peptide directed towards the N terminal region of human PCDHGA4
Sequence:	GDPVRSGTAR ILIILVDND NAPVFTQPEY HVSVRENVVPV GTRLLTVKAT
Predicted Reactivity:	Cow: 86%, Dog: 93%, Guinea Pig: 93%, Horse: 86%, Human: 100%, Mouse: 100%, Rat: 100%, Zebrafish: 86%
Characteristics:	This is a rabbit polyclonal antibody against PCDHGA4. It was validated on Western Blot using a cell lysate as a positive control.
Purification:	Affinity Purified

## Target Details

Target:	Protocadherin gamma Subfamily A, 4 (PCDHGA4)
---------	--

## Target Details

Alternative Name:	PCDHGA4 ( <a href="#">PCDHGA4 Products</a> )
Background:	<p>PCDHGA4 is a single-pass type I membrane protein. It contains 6 cadherin domains. PCDHGA4 is a potential calcium-dependent cell-adhesion protein. It may be involved in the establishment and maintenance of specific neuronal connections in the brain. This gene is a member of the protocadherin gamma gene cluster, one of three related clusters tandemly linked on chromosome five. These gene clusters have an immunoglobulin-like organization, suggesting that a novel mechanism may be involved in their regulation and expression. The gamma gene cluster includes 22 genes divided into 3 subfamilies. Subfamily A contains 12 genes, subfamily B contains 7 genes and 2 pseudogenes, and the more distantly related subfamily C contains 3 genes. The tandem array of 22 large, variable region exons are followed by a constant region, containing 3 exons shared by all genes in the cluster. Each variable region exon encodes the extracellular region, which includes 6 cadherin ectodomains and a transmembrane region. The constant region exons encode the common cytoplasmic region. These neural cadherin-like cell adhesion proteins most likely play a critical role in the establishment and function of specific cell-cell connections in the brain. Alternative splicing has been described for the gamma cluster genes.</p> <p>Alias Symbols: PCDH-GAMMA-A4</p> <p>Protein Size: 820</p>
Molecular Weight:	86 kDa
Gene ID:	56111
NCBI Accession:	<a href="#">NM_032053</a> , <a href="#">NP_114442</a>

## Application Details

Application Notes:	Optimal working dilutions should be determined experimentally by the investigator.
Comment:	Antigen size: 820 AA
Restrictions:	For Research Use only

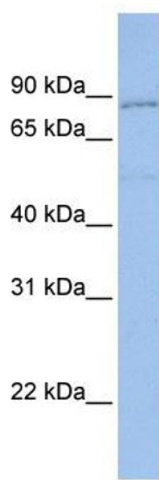
## Handling

Format:	Liquid
Concentration:	Lot specific
Buffer:	Liquid. Purified antibody supplied in 1x PBS buffer with 0.09 % (w/v) sodium azide and 2 % sucrose.

## Handling

Preservative:	Sodium azide
Precaution of Use:	This product contains Sodium azide: a POISONOUS AND HAZARDOUS SUBSTANCE which should be handled by trained staff only.
Handling Advice:	Avoid repeated freeze-thaw cycles.
Storage:	-20 °C
Storage Comment:	For short term use, store at 2-8°C up to 1 week. For long term storage, store at -20°C in small aliquots to prevent freeze-thaw cycles.

## Images



**Western Blotting**

**Image 1.** WB Suggested Anti-PCDHGA4 Antibody Titration:  
0.2-1 ug/ml Positive Control: Hela cell lysate