



[Go to Product page](#)

Datasheet for ABIN2783728

## anti-PCDHGC4 antibody (N-Term)

### 2 Images

#### Overview

Quantity:	100 µL
Target:	PCDHGC4
Binding Specificity:	N-Term
Reactivity:	Human, Rat, Mouse, Zebrafish (Danio rerio), Horse, Pig, Rabbit
Host:	Rabbit
Clonality:	Polyclonal
Conjugate:	This PCDHGC4 antibody is un-conjugated
Application:	Western Blotting (WB), Immunohistochemistry (IHC)

#### Product Details

Immunogen:	The immunogen is a synthetic peptide directed towards the N terminal region of human PCDHGC4
Sequence:	VKKRSDGSLV PELLEKPLD REKQSDYRLV LTAVDGGNPP RSGTAE LRVS
Predicted Reactivity:	Horse: 100%, Human: 100%, Mouse: 100%, Pig: 91%, Rabbit: 79%, Rat: 100%, Zebrafish: 100%
Characteristics:	This is a rabbit polyclonal antibody against PCDHGC4. It was validated on Western Blot using a cell lysate as a positive control.
Purification:	Affinity Purified

#### Target Details

Target:	PCDHGC4
---------	---------

## Target Details

---

Alternative Name: PCDHGC4 ([PCDHGC4 Products](#))

---

Background: PCDHGC4 is a single-pass type I membrane protein. It contains 6 cadherin domains. PCDHGC4 is a potential calcium-dependent cell-adhesion protein. It may be involved in the establishment and maintenance of specific neuronal connections in the brain. This gene is a member of the protocadherin gamma gene cluster, one of three related clusters tandemly linked on chromosome five. These gene clusters have an immunoglobulin-like organization, suggesting that a novel mechanism may be involved in their regulation and expression. The gamma gene cluster includes 22 genes divided into 3 subfamilies. Subfamily A contains 12 genes, subfamily B contains 7 genes and 2 pseudogenes, and the more distantly related subfamily C contains 3 genes. The tandem array of 22 large, variable region exons are followed by a constant region, containing 3 exons shared by all genes in the cluster. Each variable region exon encodes the extracellular region, which includes 6 cadherin ectodomains and a transmembrane region. The constant region exons encode the common cytoplasmic region. These neural cadherin-like cell adhesion proteins most likely play a critical role in the establishment and function of specific cell-cell connections in the brain. Alternative splicing has been described for the gamma cluster genes.

Alias Symbols: MGC119489, PCDH-GAMMA-C4

Protein Size: 938

---

Molecular Weight: 98 kDa

---

Gene ID: 56098

---

NCBI Accession: [NM\\_018928](#), [NP\\_061751](#)

---

UniProt: [Q9Y5F7](#)

---

## Application Details

---

Application Notes: Optimal working dilutions should be determined experimentally by the investigator.

---

Comment: Antigen size: 938 AA

---

Restrictions: For Research Use only

---

## Handling

---

Format: Liquid

---

Concentration: Lot specific

---

Buffer: Liquid. Purified antibody supplied in 1x PBS buffer with 0.09 % (w/v) sodium azide and 2 %

---

## Handling

sucrose.

Preservative: Sodium azide

Precaution of Use: This product contains Sodium azide: a POISONOUS AND HAZARDOUS SUBSTANCE which should be handled by trained staff only.

Handling Advice: Avoid repeated freeze-thaw cycles.

Storage: -20 °C

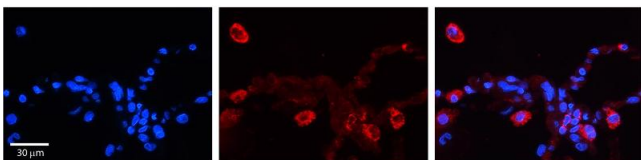
Storage Comment: For short term use, store at 2-8°C up to 1 week. For long term storage, store at -20°C in small aliquots to prevent freeze-thaw cycles.

## Images



### Western Blotting

**Image 1.** WB Suggested Anti-PCDHGC4 Antibody Titration:  
0.2-1 ug/ml Positive Control: 293T cell lysate



### Immunohistochemistry

**Image 2.** PCDHGC4 antibody - N-terminal region Formalin Fixed Paraffin Embedded Tissue: Human Lung Tissue  
Observed Staining: Cytoplasm of pneumocytes  
Primary Antibody Concentration: 1:100 Secondary Antibody: Donkey anti-Rabbit-Cy3 Secondary Antibody Concentration: 1:200  
Magnification: 20X Exposure Time: 0.5 - 2.0 sec