

Datasheet for ABIN2783730
anti-PCDHB15 antibody (N-Term)[Go to Product page](#)

2 Images

Overview

Quantity:	100 µL
Target:	PCDHB15
Binding Specificity:	N-Term
Reactivity:	Human, Cow, Horse, Pig, Dog
Host:	Rabbit
Clonality:	Polyclonal
Conjugate:	This PCDHB15 antibody is un-conjugated
Application:	Western Blotting (WB)

Product Details

Immunogen:	The immunogen is a synthetic peptide directed towards the N terminal region of human PCDHB15
Sequence:	VMEETERGSF VANLANDLGL GVGELAERGA RVSSEDNEQG LQLDLQTGQL
Predicted Reactivity:	Cow: 86%, Dog: 93%, Horse: 86%, Human: 100%, Pig: 86%
Characteristics:	This is a rabbit polyclonal antibody against PCDHB15. It was validated on Western Blot.
Purification:	Affinity Purified

Target Details

Target:	PCDHB15
Alternative Name:	PCDHB15 (PCDHB15 Products)

Target Details

Background:	<p>This gene is a member of the protocadherin beta gene cluster, one of three related gene clusters tandemly linked on chromosome five. The gene clusters demonstrate an unusual genomic organization similar to that of B-cell and T-cell receptor gene clusters. The beta cluster contains 16 genes and 3 pseudogenes, each encoding 6 extracellular cadherin domains and a cytoplasmic tail that deviates from others in the cadherin superfamily. The extracellular domains interact in a homophilic manner to specify differential cell-cell connections. Unlike the alpha and gamma clusters, the transcripts from these genes are made up of only one large exon, not sharing common 3' exons as expected. These neural cadherin-like cell adhesion proteins are integral plasma membrane proteins. Their specific functions are unknown but they most likely play a critical role in the establishment and function of specific cell-cell neural connections.</p> <p>Alias Symbols: PCDH-BETA15</p> <p>Protein Interaction Partner: UBC,</p> <p>Protein Size: 787</p>
-------------	---

Molecular Weight:	83 kDa
-------------------	--------

Gene ID:	56121
----------	-------

NCBI Accession:	NM_018935 , NP_061758
-----------------	---

UniProt:	Q9Y5E8
----------	------------------------

Application Details

Application Notes:	Optimal working dilutions should be determined experimentally by the investigator.
--------------------	--

Comment:	Antigen size: 787 AA
----------	----------------------

Restrictions:	For Research Use only
---------------	-----------------------

Handling

Format:	Liquid
---------	--------

Concentration:	Lot specific
----------------	--------------

Buffer:	Liquid. Purified antibody supplied in 1x PBS buffer with 0.09 % (w/v) sodium azide and 2 % sucrose.
---------	---

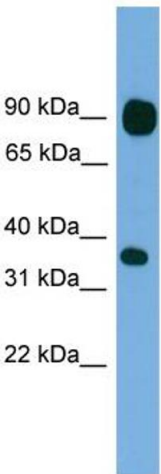
Preservative:	Sodium azide
---------------	--------------

Precaution of Use:	This product contains Sodium azide: a POISONOUS AND HAZARDOUS SUBSTANCE which
--------------------	---

Handling

	should be handled by trained staff only.
Handling Advice:	Avoid repeated freeze-thaw cycles.
Storage:	-20 °C
Storage Comment:	For short term use, store at 2-8°C up to 1 week. For long term storage, store at -20°C in small aliquots to prevent freeze-thaw cycles.

Images



Western Blotting

Image 1. WB Suggested Anti-PCDHB15 Antibody Titration:
0.2-1 ug/ml Positive Control: Hela cell lysate



Rabbit Anti-PCDHB15 Antibody
Catalog Number: ARP49401
Lot Number: QC29123
Lane: Hela Cell Lysate

Antibody Titration: 1.0µg/ml
Gel Concentration: 12%

Western Blotting

Image 2. WB Suggested Anti-PCDHB15
Antibody Titration: 0.2-1 µg/mL
Positive Control: Hela cell lysate