

Datasheet for ABIN2783737
anti-YIPF1 antibody (Middle Region)[Go to Product page](#)[1 Image](#)[1 Publication](#)

Overview

Quantity:	100 µL
Target:	YIPF1
Binding Specificity:	Middle Region
Reactivity:	Human, Dog, Rabbit, Rat, Horse, Mouse, Guinea Pig
Host:	Rabbit
Clonality:	Polyclonal
Conjugate:	This YIPF1 antibody is un-conjugated
Application:	Western Blotting (WB)

Product Details

Immunogen:	The immunogen is a synthetic peptide directed towards the middle region of human YIPF1
Sequence:	HLGEKTYHYV PEFRKVSIAA TIIYAYAWLV PLALWGFLMW RNSKVMNIVS
Predicted Reactivity:	Dog: 100%, Guinea Pig: 100%, Horse: 100%, Human: 100%, Mouse: 93%, Rabbit: 100%, Rat: 100%
Characteristics:	This is a rabbit polyclonal antibody against YIPF1. It was validated on Western Blot using a cell lysate as a positive control.
Purification:	Affinity Purified

Target Details

Target:	YIPF1
---------	-------

Target Details

Alternative Name:	YIPF1 (YIPF1 Products)
Background:	<p>YIPF1 is a multi-pass membrane protein. It belongs to the YIP1 family. The exact function of YIPF1 remains unknown.</p> <p>Alias Symbols: DJ167A19.1, FinGER1</p> <p>Protein Interaction Partner: YIPF6, UBC,</p> <p>Protein Size: 306</p>
Molecular Weight:	34 kDa
Gene ID:	54432
NCBI Accession:	NM_018982 , NP_061855
UniProt:	Q9Y548

Application Details

Application Notes:	Optimal working dilutions should be determined experimentally by the investigator.
Comment:	Antigen size: 306 AA
Restrictions:	For Research Use only

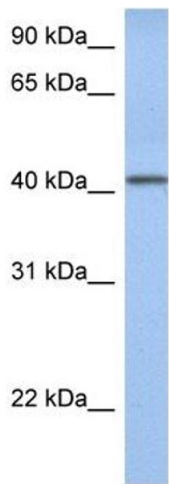
Handling

Format:	Liquid
Concentration:	Lot specific
Buffer:	Liquid. Purified antibody supplied in 1x PBS buffer with 0.09 % (w/v) sodium azide and 2 % sucrose.
Preservative:	Sodium azide
Precaution of Use:	This product contains Sodium azide: a POISONOUS AND HAZARDOUS SUBSTANCE which should be handled by trained staff only.
Handling Advice:	Avoid repeated freeze-thaw cycles.
Storage:	-20 °C
Storage Comment:	For short term use, store at 2-8°C up to 1 week. For long term storage, store at -20°C in small aliquots to prevent freeze-thaw cycles.

Publications

Product cited in: Mehrle, Rosenfelder, Schupp, del Val, Arlt, Hahne, Bechtel, Simpson, Hofmann, Hide, Glatting, Huber, Pepperkok, Poustka, Wiemann: "The LIFEdb database in 2006." in: **Nucleic acids research**, Vol. 34, Issue Database issue, pp. D415-8, (2005) ([PubMed](#)).

Images



Western Blotting

Image 1. WB Suggested Anti-YIPF1 Antibody Titration: 0.2-1 ug/ml Positive Control: Human Lung