

Datasheet for ABIN2783739

anti-SMCR7L antibody (N-Term)

4 Images

1 Publication

[Go to Product page](#)

Overview

| | |
|----------------------|--|
| Quantity: | 100 µL |
| Target: | SMCR7L |
| Binding Specificity: | N-Term |
| Reactivity: | Human, Mouse, Rat, Cow, Dog, Guinea Pig, Horse, Rabbit |
| Host: | Rabbit |
| Clonality: | Polyclonal |
| Conjugate: | This SMCR7L antibody is un-conjugated |
| Application: | Western Blotting (WB) |

Product Details

| | |
|-----------------------|--|
| Immunogen: | The immunogen is a synthetic peptide directed towards the N terminal region of human SMCR7L |
| Sequence: | GAAMLGIATL AVKRMVDRAI SAPTSPTRLS HSGKRSWEEP NWMGSPRLLN |
| Predicted Reactivity: | Cow: 100%, Dog: 100%, Guinea Pig: 100%, Horse: 100%, Human: 100%, Mouse: 100%, Rabbit: 100%, Rat: 100% |
| Characteristics: | This is a rabbit polyclonal antibody against SMCR7L. It was validated on Western Blot using a cell lysate as a positive control. |
| Purification: | Affinity Purified |

Target Details

| | |
|---------|--------|
| Target: | SMCR7L |
|---------|--------|

Target Details

| | |
|-------------------|--|
| Alternative Name: | SMCR7L (SMCR7L Products) |
| Background: | <p>The specific function of this protein remains unknown.</p> <p>Alias Symbols: FLJ20232, HSU79252, dJ1104E15.3, MID51, MIEF1</p> <p>Protein Interaction Partner: AGTRAP, UBQLN1, UBC, MAGEA1, MIEF1, FIS1, DNM1L, YWHAG,</p> <p>Protein Size: 463</p> |
| Molecular Weight: | 51 kDa |
| Gene ID: | 54471 |
| NCBI Accession: | NM_019008 , NP_061881 |
| UniProt: | Q9NQG6 |

Application Details

| | |
|--------------------|--|
| Application Notes: | Optimal working dilutions should be determined experimentally by the investigator. |
| Comment: | Antigen size: 463 AA |
| Restrictions: | For Research Use only |

Handling

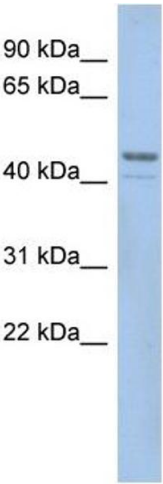
| | |
|--------------------|---|
| Format: | Liquid |
| Concentration: | Lot specific |
| Buffer: | Liquid. Purified antibody supplied in 1x PBS buffer with 0.09 % (w/v) sodium azide and 2 % sucrose. |
| Preservative: | Sodium azide |
| Precaution of Use: | This product contains Sodium azide: a POISONOUS AND HAZARDOUS SUBSTANCE which should be handled by trained staff only. |
| Handling Advice: | Avoid repeated freeze-thaw cycles. |
| Storage: | -20 °C |
| Storage Comment: | For short term use, store at 2-8°C up to 1 week. For long term storage, store at -20°C in small aliquots to prevent freeze-thaw cycles. |

Publications

| | |
|-------------------|---|
| Product cited in: | Mehrle, Rosenfelder, Schupp, del Val, Arlt, Hahne, Bechtel, Simpson, Hofmann, Hide, Glatting, |
|-------------------|---|

Huber, Pepperkok, Poustka, Wiemann: "The LIFEdb database in 2006." in: **Nucleic acids research**, Vol. 34, Issue Database issue, pp. D415-8, (2005) ([PubMed](#)).

Images



Western Blotting

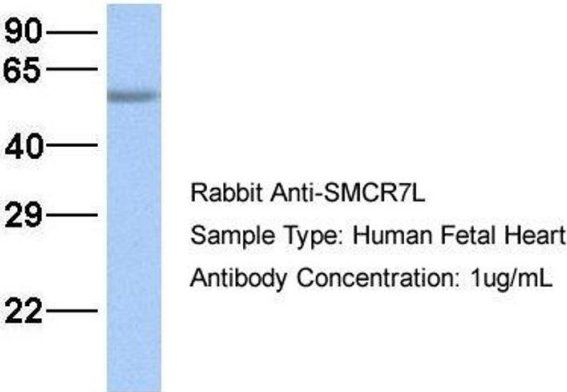
Image 1. WB Suggested Anti-SMCR7L

Antibody Titration: 0.2-1 µg/mL ELISA Titer: 1:12500

Positive Control: HT1080 cell lysate

SMCR7L is strongly supported by BioGPS gene expression data to be expressed in Human HT1080 cells

SMCR7L

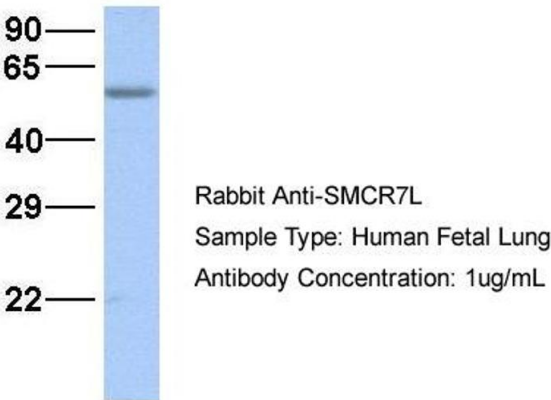


Western Blotting

Image 2. Host: Rabbit Target Name: SMCR7L Sample Type:

Human Fetal Heart Antibody Dilution: 1.0ug/ml

SMCR7L



Western Blotting

Image 3. Host: Rabbit Target Name: SMCR7L Sample Type:

Human Fetal Lung Antibody Dilution: 1.0ug/ml

Please check the [product details page](#) for more images. Overall 4 images are available for ABIN2783739.