

Datasheet for ABIN2783741

anti-FAM105A antibody (Middle Region)[Go to Product page](#)**1** Image**1** Publication

Overview

Quantity:	100 µL
Target:	FAM105A
Binding Specificity:	Middle Region
Reactivity:	Human, Mouse, Rat, Rabbit, Dog, Guinea Pig, Horse, Cow
Host:	Rabbit
Clonality:	Polyclonal
Conjugate:	This FAM105A antibody is un-conjugated
Application:	Western Blotting (WB)

Product Details

Immunogen:	The immunogen is a synthetic peptide directed towards the middle region of human FAM105A
Sequence:	QYSFGPEKYT GSNVFGKLRK YVELLKTQWT EFNGIRDYHK RGSMCNTLFS
Predicted Reactivity:	Cow: 100%, Dog: 100%, Guinea Pig: 100%, Horse: 100%, Human: 100%, Mouse: 100%, Rabbit: 100%, Rat: 100%
Characteristics:	This is a rabbit polyclonal antibody against FAM105A. It was validated on Western Blot using a cell lysate as a positive control.
Purification:	Affinity Purified

Target Details

Target:	FAM105A
---------	---------

Target Details

Alternative Name:	FAM105A (FAM105A Products)
Background:	FAM105A belongs to the FAM105 family. The exact function of FAM105A remains unknown. Alias Symbols: FLJ11127, NET20 Protein Interaction Partner: UBC, ELAVL1, Protein Size: 356
Molecular Weight:	42 kDa
Gene ID:	54491
NCBI Accession:	NM_019018 , NP_061891
UniProt:	Q9NUU6

Application Details

Application Notes:	Optimal working dilutions should be determined experimentally by the investigator.
Comment:	Antigen size: 356 AA
Restrictions:	For Research Use only

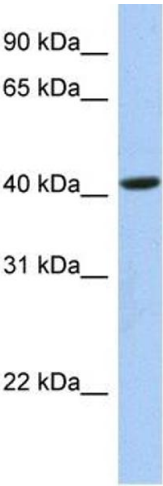
Handling

Format:	Liquid
Concentration:	Lot specific
Buffer:	Liquid. Purified antibody supplied in 1x PBS buffer with 0.09 % (w/v) sodium azide and 2 % sucrose.
Preservative:	Sodium azide
Precaution of Use:	This product contains Sodium azide: a POISONOUS AND HAZARDOUS SUBSTANCE which should be handled by trained staff only.
Handling Advice:	Avoid repeated freeze-thaw cycles.
Storage:	-20 °C
Storage Comment:	For short term use, store at 2-8°C up to 1 week. For long term storage, store at -20°C in small aliquots to prevent freeze-thaw cycles.

Publications

Product cited in: Gerhard, Wagner, Feingold, Shenmen, Grouse, Schuler, Klein, Old, Rasooly, Good, Guyer, Peck,

Derge, Lipman, Collins, Jang, Sherry, Feolo, Misquitta, Lee, Rotmistrovsky, Greenhut, Schaefer, Buetow et al.: "The status, quality, and expansion of the NIH full-length cDNA project: the Mammalian Gene Collection (MGC). ..." in: **Genome research**, Vol. 14, Issue 10B, pp. 2121-7, (2004) ([PubMed](#)).



Western Blotting

Image 1. WB Suggested Anti-FAM105A Antibody Titration: 0.2-1 ug/ml Positive Control: 721_B cell lysate FAM105A is supported by BioGPS gene expression data to be expressed in 721_B