



[Go to Product page](#)

Datasheet for ABIN2783750

anti-CRLS1 antibody (Middle Region)

3 Images

1 Publication

Overview

Quantity:	100 µL
Target:	CRLS1 (CLS)
Binding Specificity:	Middle Region
Reactivity:	Human, Mouse, Rat, Cow, Dog, Guinea Pig, Horse, Rabbit, Zebrafish (Danio rerio)
Host:	Rabbit
Clonality:	Polyclonal
Conjugate:	This CRLS1 antibody is un-conjugated
Application:	Western Blotting (WB)

Product Details

Immunogen:	The immunogen is a synthetic peptide directed towards the middle region of human CRLS1
Sequence:	WTIPNMLSMT RIGLAPVLGY LIIEDFNIA LGVFALAGLT DLLDGFARN
Predicted Reactivity:	Cow: 100%, Dog: 100%, Guinea Pig: 100%, Horse: 100%, Human: 100%, Mouse: 100%, Rabbit: 100%, Rat: 100%, Zebrafish: 86%
Characteristics:	This is a rabbit polyclonal antibody against CRLS1. It was validated on Western Blot.
Purification:	Affinity Purified

Target Details

Target:	CRLS1 (CLS)
Alternative Name:	CRLS1 (CLS Products)

Target Details

Background: CRLS1 catalyzes the reversible phosphatidyl group transfer from one phosphatidylglycerol molecule to another to form cardiolipin (CL) (diphosphatidylglycerol) and glycerol.
Alias Symbols: C20orf155, CLS1, GCD10, dJ967N21.6, CLS
Protein Interaction Partner: FBXO15, PINK1, UBC, MCM6, MCM7,
Protein Size: 301

Molecular Weight: 32 kDa

Gene ID: 54675

NCBI Accession: [NM_019095](#), [NP_061968](#)

UniProt: [Q9UJA2](#)

Application Details

Application Notes: Optimal working dilutions should be determined experimentally by the investigator.

Comment: Antigen size: 301 AA

Restrictions: For Research Use only

Handling

Format: Liquid

Concentration: Lot specific

Buffer: Liquid. Purified antibody supplied in 1x PBS buffer with 0.09 % (w/v) sodium azide and 2 % sucrose.

Preservative: Sodium azide

Precaution of Use: This product contains Sodium azide: a POISONOUS AND HAZARDOUS SUBSTANCE which should be handled by trained staff only.

Handling Advice: Avoid repeated freeze-thaw cycles.

Storage: -20 °C

Storage Comment: For short term use, store at 2-8°C up to 1 week. For long term storage, store at -20°C in small aliquots to prevent freeze-thaw cycles.

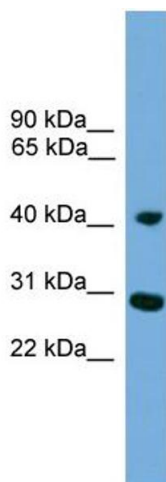
Publications

Product cited in: Croston, Shepherd, Thapa, Nichols, Lewis, Dabkowski, Jagannathan, Baseler, Hollander: "

Evaluation of the cardiolipin biosynthetic pathway and its interactions in the diabetic heart." in:

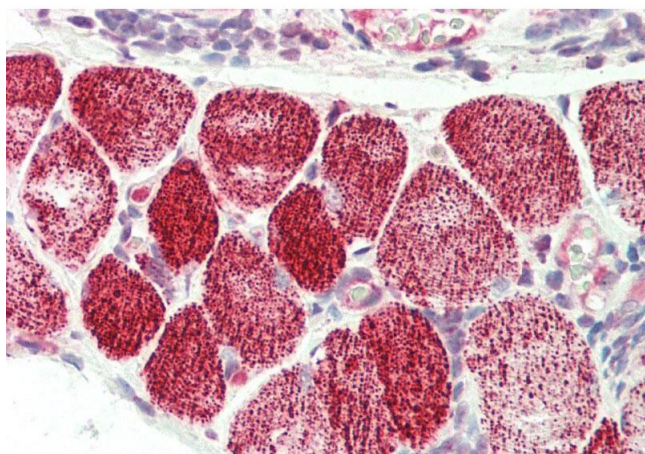
Life sciences, Vol. 93, Issue 8, pp. 313-22, (2013) ([PubMed](#)).

Images



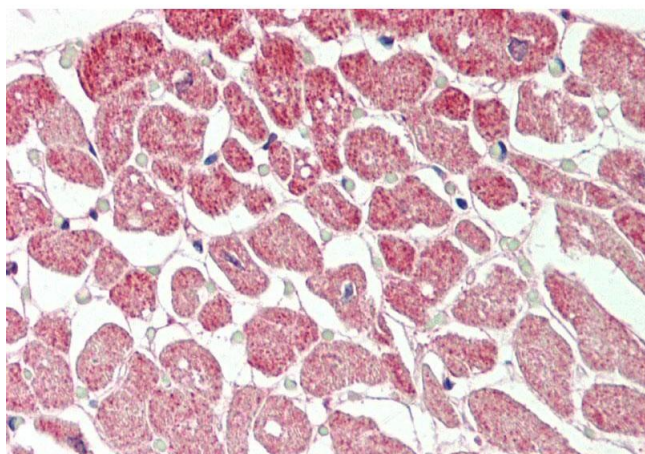
Western Blotting

Image 1. WB Suggested Anti-CRLS1 Antibody Titration: 0.2-1 ug/ml Positive Control: Human Muscle



Immunohistochemistry

Image 2. Rabbit Anti-CRLS1 antibody Formalin Fixed Paraffin Embedded Tissue: Human Tonsil, Skeletal Myocytes Primary antibody Concentration: 1:100 Secondary Antibody: Donkey anti-Rabbit-Cy3 Secondary Antibody Concentration: 1:200 Magnification: 20x Exposure Time: 0.5-2.0sec



Immunohistochemistry

Image 3. Rabbit Anti-CRLS1 antibody Formalin Fixed Paraffin Embedded Tissue: Human Heart Primary antibody Concentration: 1:100 Secondary Antibody: Donkey anti-Rabbit-Cy3 Secondary Antibody Concentration: 1:200 Magnification: 20x Exposure Time: 0.5-2.0sec