



[Go to Product page](#)

Datasheet for ABIN2783752

## anti-LRRC8A antibody (N-Term)

### 2 Images

#### Overview

Quantity:	100 µL
Target:	LRRC8A
Binding Specificity:	N-Term
Reactivity:	Human, Mouse, Rat, Cow, Dog, Guinea Pig, Horse, Rabbit, Zebrafish (Danio rerio)
Host:	Rabbit
Clonality:	Polyclonal
Conjugate:	This LRRC8A antibody is un-conjugated
Application:	Western Blotting (WB)

#### Product Details

Immunogen:	The immunogen is a synthetic peptide directed towards the N terminal region of human LRRC8A
Sequence:	IPVTELRIFA DTQPAYRILK PWWDVFTDYI SIVMLMIAVF GGTLQVTQDK
Predicted Reactivity:	Cow: 100%, Dog: 100%, Guinea Pig: 100%, Horse: 100%, Human: 100%, Mouse: 100%, Rabbit: 100%, Rat: 100%, Zebrafish: 100%
Characteristics:	This is a rabbit polyclonal antibody against LRRC8A. It was validated on Western Blot using a cell lysate as a positive control.
Purification:	Affinity Purified

#### Target Details

Target:	LRRC8A
---------	--------

## Target Details

---

Alternative Name: [LRRC8A \(LRRC8A Products\)](#)

---

Background: LRRC8A is a protein belonging to the leucine-rich repeat family of proteins, which are involved in diverse biological processes, including cell adhesion, cellular trafficking, and hormone-receptor interactions. LRRC8A is a putative four-pass transmembrane protein that plays a role in B cell development. Defects in this gene cause autosomal dominant non-Bruton type agammaglobulinemia, an immunodeficiency disease resulting from defects in B cell maturation. This gene encodes a protein belonging to the leucine-rich repeat family of proteins, which are involved in diverse biological processes, including cell adhesion, cellular trafficking, and hormone-receptor interactions. This family member is a putative four-pass transmembrane protein that plays a role in B cell development. Defects in this gene cause autosomal dominant non-Bruton type agammaglobulinemia, an immunodeficiency disease resulting from defects in B cell maturation. Multiple alternatively spliced transcript variants, which encode the same protein, have been identified for this gene.

Alias Symbols: [FLJ10337](#), [KIAA1437](#), [LRRC8](#), [AGM5](#)

Protein Interaction Partner: [SDHA](#), [ELAVL1](#), [UBC](#),

Protein Size: 810

---

Molecular Weight: 94 kDa

---

Gene ID: 56262

---

NCBI Accession: [NM\\_019594](#), [NP\\_062540](#)

---

UniProt: [Q8IWT6](#)

---

## Application Details

---

Application Notes: Optimal working dilutions should be determined experimentally by the investigator.

---

Comment: Antigen size: 810 AA

---

Restrictions: For Research Use only

---

## Handling

---

Format: Liquid

---

Concentration: Lot specific

---

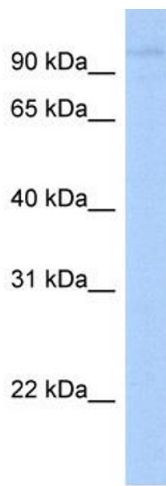
Buffer: Liquid. Purified antibody supplied in 1x PBS buffer with 0.09 % (w/v) sodium azide and 2 % sucrose.

---

## Handling

Preservative:	Sodium azide
Precaution of Use:	This product contains Sodium azide: a POISONOUS AND HAZARDOUS SUBSTANCE which should be handled by trained staff only.
Handling Advice:	Avoid repeated freeze-thaw cycles.
Storage:	-20 °C
Storage Comment:	For short term use, store at 2-8°C up to 1 week. For long term storage, store at -20°C in small aliquots to prevent freeze-thaw cycles.

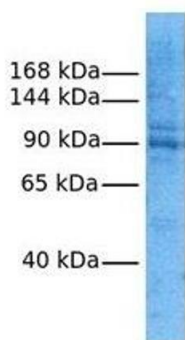
## Images



### Western Blotting

**Image 1.** WB Suggested Anti-LRRC8A Antibody Titration:  
0.2-1 ug/ml Positive Control: Jurkat cell lysate

## LRRC8A



### Western Blotting

**Image 2.** Host: Rabbit Target Name: LRRC8A Sample  
Tissue: Human HepG2 Antibody Dilution: 1.0ug/ml