

Datasheet for ABIN2783774
anti-ENTPD7 antibody (C-Term)[Go to Product page](#)

1 Image

Overview

Quantity:	100 µL
Target:	ENTPD7
Binding Specificity:	C-Term
Reactivity:	Human, Mouse, Cow, Guinea Pig, Rat, Dog, Horse, Rabbit
Host:	Rabbit
Clonality:	Polyclonal
Conjugate:	This ENTPD7 antibody is un-conjugated
Application:	Western Blotting (WB)

Product Details

Immunogen:	The immunogen is a synthetic peptide directed towards the C terminal region of human ENTPD7
Sequence:	EHLKYQCFK SAWMYQVLHE GFHFPYDYPN LRTAQLVYDR EVQWTLGAIL
Predicted Reactivity:	Cow: 100%, Dog: 92%, Guinea Pig: 100%, Horse: 90%, Human: 100%, Mouse: 100%, Rabbit: 93%, Rat: 100%
Characteristics:	This is a rabbit polyclonal antibody against ENTPD7. It was validated on Western Blot using a cell lysate as a positive control.
Purification:	Affinity Purified

Target Details

Target:	ENTPD7
---------	--------

Target Details

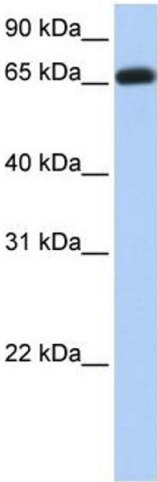
Alternative Name:	ENTPD7 (ENTPD7 Products)
Background:	<p>ENTPD7 is a multi-pass membrane protein. It belongs to the GDA1/CD39 NTPase family. It preferentially hydrolyzes nucleoside 5'-triphosphates. The order of activity with respect to possible substrates is UTP > GTP > CTP.</p> <p>Alias Symbols: FLJ30978, LALP1, MGC141913, RP11-483F11.1</p> <p>Protein Size: 604</p>
Molecular Weight:	69 kDa
Gene ID:	57089
NCBI Accession:	NM_020354 , NP_065087
UniProt:	Q9NQZ7

Application Details

Application Notes:	Optimal working dilutions should be determined experimentally by the investigator.
Comment:	Antigen size: 604 AA
Restrictions:	For Research Use only

Handling

Format:	Liquid
Concentration:	Lot specific
Buffer:	Liquid. Purified antibody supplied in 1x PBS buffer with 0.09 % (w/v) sodium azide and 2 % sucrose.
Preservative:	Sodium azide
Precaution of Use:	This product contains Sodium azide: a POISONOUS AND HAZARDOUS SUBSTANCE which should be handled by trained staff only.
Handling Advice:	Avoid repeated freeze-thaw cycles.
Storage:	-20 °C
Storage Comment:	For short term use, store at 2-8°C up to 1 week. For long term storage, store at -20°C in small aliquots to prevent freeze-thaw cycles.



Western Blotting

Image 1. WB Suggested Anti-ENTPD7 Antibody Titration:
0.2-1 ug/ml Positive Control: Human brain