



Datasheet for ABIN2783776  
**anti-PLXDC1 antibody (N-Term)**



[Go to Product page](#)

2 Images

Overview

Quantity:	100 µL
Target:	PLXDC1
Binding Specificity:	N-Term
Reactivity:	Human, Mouse, Rat, Horse, Dog, Guinea Pig, Rabbit, Cow
Host:	Rabbit
Clonality:	Polyclonal
Conjugate:	This PLXDC1 antibody is un-conjugated
Application:	Western Blotting (WB)

Product Details

Immunogen:	The immunogen is a synthetic peptide directed towards the N terminal region of human PLXDC1
Sequence:	MDTLPDNRTR VVEDNHSYYV SRLYGPSEPH SRELWVDVAE ANRSQVKIHT
Predicted Reactivity:	Cow: 93%, Dog: 100%, Guinea Pig: 85%, Horse: 86%, Human: 100%, Mouse: 100%, Rabbit: 93%, Rat: 100%
Characteristics:	This is a rabbit polyclonal antibody against PLXDC1. It was validated on Western Blot using a cell lysate as a positive control.
Purification:	Affinity Purified

Target Details

Target:	PLXDC1
---------	--------

## Target Details

---

Alternative Name: [PLXDC1 \(PLXDC1 Products\)](#)

Background: PLXDC1 (TEM7) may play significant role in proliferation and maintenance of neovascular endothelial cells in fibrovascular membranes. TEM7 may be molecular target for new diagnostic and therapeutic strategies for proliferative diabetic retinopathy. The expression level of TEM7 closely parallels histology-based prognostication of osteogenic sarcoma metastasis and, therefore, it is a therapeutic target.

Alias Symbols: DKFZp686F0937, FLJ36270, FLJ45632, TEM3, TEM7

Protein Interaction Partner: UBC, NID1,

Protein Size: 500

Molecular Weight: 54 kDa

Gene ID: 57125

NCBI Accession: [NM\\_020405](#), [NP\\_065138](#)

UniProt: [Q8IUK5](#)

## Application Details

---

Application Notes: Optimal working dilutions should be determined experimentally by the investigator.

Comment: Antigen size: 500 AA

Restrictions: For Research Use only

## Handling

---

Format: Liquid

Concentration: Lot specific

Buffer: Liquid. Purified antibody supplied in 1x PBS buffer with 0.09 % (w/v) sodium azide and 2 % sucrose.

Preservative: Sodium azide

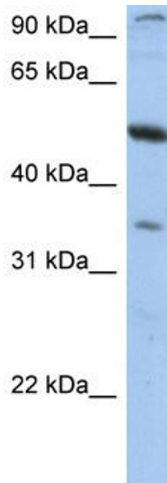
Precaution of Use: This product contains Sodium azide: a POISONOUS AND HAZARDOUS SUBSTANCE which should be handled by trained staff only.

Handling Advice: Avoid repeated freeze-thaw cycles.

Storage: -20 °C

Storage Comment: For short term use, store at 2-8°C up to 1 week. For long term storage, store at -20°C in small

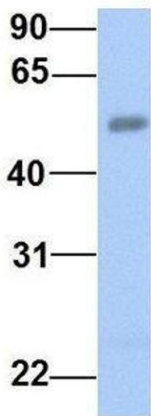
aliquots to prevent freeze-thaw cycles.



#### Western Blotting

**Image 1.** WB Suggested Anti-PLXDC1 Antibody Titration:  
0.2-1 ug/ml Positive Control: HepG2 cell lysate

### PLXDC1



Rabbit Anti-PLXDC1  
Sample Type: Human Fetal Heart  
Antibody Concentration: 1ug/mL

#### Western Blotting

**Image 2.** Host: Rabbit Target Name: PLXDC1 Sample Type:  
Human Fetal Heart Antibody Dilution: 1.0ug/ml