



[Go to Product page](#)

Datasheet for ABIN2783778
anti-RHBG antibody (C-Term)

2 Images

Overview

Quantity:	100 µL
Target:	RHBG
Binding Specificity:	C-Term
Reactivity:	Human, Mouse, Rabbit, Rat, Cow, Dog, Guinea Pig, Horse
Host:	Rabbit
Clonality:	Polyclonal
Conjugate:	This RHBG antibody is un-conjugated
Application:	Western Blotting (WB), Immunohistochemistry (IHC)

Product Details

Immunogen:	The immunogen is a synthetic peptide directed towards the C terminal region of human RHBG
Sequence:	LATHEAYGDG LESVFPLIAE GQRSATSQAM HQLFGLFVTL MFASVGGGLG
Predicted Reactivity:	Cow: 100%, Dog: 79%, Guinea Pig: 100%, Horse: 86%, Human: 100%, Mouse: 93%, Rabbit: 100%, Rat: 93%
Characteristics:	This is a rabbit polyclonal antibody against RHBG. It was validated on Western Blot using a cell lysate as a positive control.
Purification:	Affinity Purified

Target Details

Target:	RHBG
---------	------

Target Details

Abstract:	RHBG Products
Background:	<p>RHBG and RHCG are non-erythroid members of the Rhesus (Rh) protein family that are mainly expressed in the kidney and belong to the methylammonium-ammonium permease/ammonia transporters superfamily. Rh family proteins are all predicted to be transmembrane proteins with 12 membrane spanning domains and intracytoplasmic N- and C-termini. RHBG and RHCG are non-erythroid members of the Rhesus (Rh) protein family that are mainly expressed in the kidney and belong to the methylammonium-ammonium permease/ammonia transporters superfamily. Rh family proteins are all predicted to be transmembrane proteins with 12 membrane spanning domains and intracytoplasmic N- and C-termini. PRIMARYREFSEQ_SPAN PRIMARY_IDENTIFIER PRIMARY_SPAN COMP 1-1309 AF193807.1 1-1309 1310-1310 AL139130.28 4265-4265 1311-1806 AF193807.1 1310-1805</p> <p>Alias Symbols: SLC42A2</p> <p>Protein Interaction Partner: SH2B1,</p> <p>Protein Size: 441</p>
Molecular Weight:	47 kDa
Gene ID:	57127
NCBI Accession:	NM_020407 , NP_065140
UniProt:	Q9H310

Application Details

Application Notes:	Optimal working dilutions should be determined experimentally by the investigator.
Comment:	Antigen size: 441 AA
Restrictions:	For Research Use only

Handling

Format:	Liquid
Concentration:	Lot specific
Buffer:	Liquid. Purified antibody supplied in 1x PBS buffer with 0.09 % (w/v) sodium azide and 2 % sucrose.
Preservative:	Sodium azide
Precaution of Use:	This product contains Sodium azide: a POISONOUS AND HAZARDOUS SUBSTANCE which

Handling

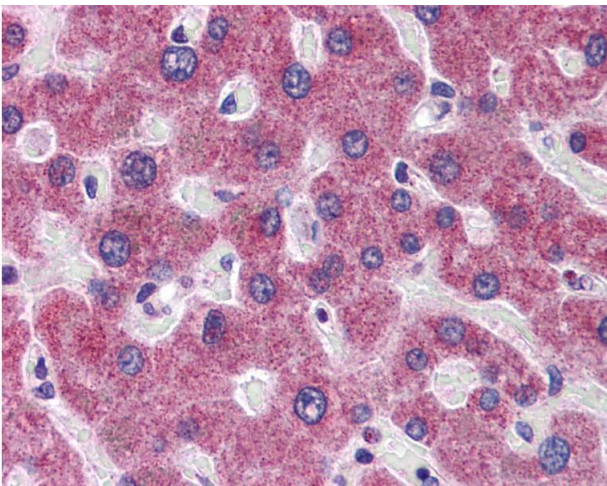
should be handled by trained staff only.

Handling Advice: Avoid repeated freeze-thaw cycles.

Storage: -20 °C

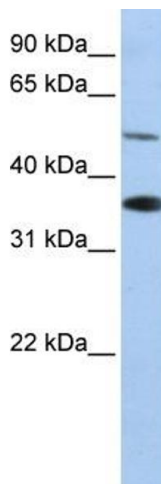
Storage Comment: For short term use, store at 2-8°C up to 1 week. For long term storage, store at -20°C in small aliquots to prevent freeze-thaw cycles.

Images



Immunohistochemistry

Image 1.



Western Blotting

Image 2. WB Suggested Anti-RHBG Antibody Titration: 0.2-1 ug/ml Positive Control: HepG2 cell lysate RHBG is supported by BioGPS gene expression data to be expressed in HepG2