

Datasheet for ABIN2783779
anti-TMEM63C antibody (Middle Region)[Go to Product page](#)

2 Images

Overview

Quantity:	100 µL
Target:	TMEM63C
Binding Specificity:	Middle Region
Reactivity:	Human, Mouse, Rat, Dog, Cow, Guinea Pig, Horse, Rabbit
Host:	Rabbit
Clonality:	Polyclonal
Conjugate:	This TMEM63C antibody is un-conjugated
Application:	Western Blotting (WB)

Product Details

Immunogen:	The immunogen is a synthetic peptide directed towards the middle region of human TMEM63C
Sequence:	EEEEIQTVFDM EPSSTSSTPT SLLYVATVLQ EPELNLT PAS SPARHTYGT M
Predicted Reactivity:	Cow: 92%, Dog: 86%, Guinea Pig: 93%, Horse: 93%, Human: 100%, Mouse: 100%, Rabbit: 93%, Rat: 100%
Characteristics:	This is a rabbit polyclonal antibody against TMEM63C. It was validated on Western Blot using a cell lysate as a positive control.
Purification:	Affinity Purified

Target Details

Target:	TMEM63C
---------	---------

Target Details

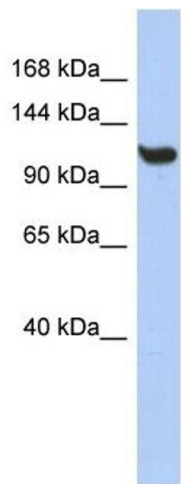
Alternative Name:	TMEM63C (TMEM63C Products)
Background:	The specific function of the protein remains unknown. Alias Symbols: C14orf171 Protein Size: 806
Molecular Weight:	93 kDa
Gene ID:	57156
NCBI Accession:	NM_020431 , NP_065164
UniProt:	Q9P1W3

Application Details

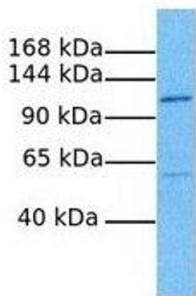
Application Notes:	Optimal working dilutions should be determined experimentally by the investigator.
Comment:	Antigen size: 806 AA
Restrictions:	For Research Use only

Handling

Format:	Liquid
Concentration:	Lot specific
Buffer:	Liquid. Purified antibody supplied in 1x PBS buffer with 0.09 % (w/v) sodium azide and 2 % sucrose.
Preservative:	Sodium azide
Precaution of Use:	This product contains Sodium azide: a POISONOUS AND HAZARDOUS SUBSTANCE which should be handled by trained staff only.
Handling Advice:	Avoid repeated freeze-thaw cycles.
Storage:	-20 °C
Storage Comment:	For short term use, store at 2-8°C up to 1 week. For long term storage, store at -20°C in small aliquots to prevent freeze-thaw cycles.



TMEM63C



Western Blotting

Image 1. WB Suggested Anti-TMEM63C Antibody Titration:
0.2-1 ug/ml ELISA Titer: 1:62500 Positive Control: THP-1 cell lysate

Western Blotting

Image 2. Host: Rabbit Target Name: TMEM63C Sample
Tissue: Human PANC1 Antibody Dilution: 1.0ug/ml