

Datasheet for ABIN2783783  
**anti-DOLPP1 antibody (N-Term)**



[Go to Product page](#)

1 Image

## Overview

Quantity:	100 µL
Target:	DOLPP1
Binding Specificity:	N-Term
Reactivity:	Mouse, Rat, Human, Zebrafish (Danio rerio), Cow, Guinea Pig, Horse, Dog
Host:	Rabbit
Clonality:	Polyclonal
Conjugate:	This DOLPP1 antibody is un-conjugated
Application:	Western Blotting (WB)

## Product Details

Immunogen:	The immunogen is a synthetic peptide directed towards the N terminal region of human DOLPP1
Sequence:	AADGQCSLPA SWRPVTLTHV EYPAGDLSGH LLAYLSLSPV FVIVGFVTLI
Predicted Reactivity:	Cow: 100%, Dog: 93%, Guinea Pig: 100%, Horse: 100%, Human: 100%, Mouse: 100%, Rat: 100%, Zebrafish: 86%
Characteristics:	This is a rabbit polyclonal antibody against DOLPP1. It was validated on Western Blot using a cell lysate as a positive control.
Purification:	Affinity Purified

## Target Details

Target:	DOLPP1
---------	--------

## Target Details

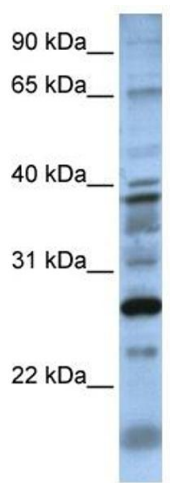
Alternative Name:	DOLPP1 ( <a href="#">DOLPP1 Products</a> )
Background:	<p>DOLPP1 is a multi-pass membrane proteinBy similarity. It belongs to the dolichyldiphosphatase family. It is required for efficient N-glycosylation and is necessary for maintaining optimal levels of dolichol-linked oligosaccharides. DOLPP1 hydrolyzes dolichyl pyrophosphate at a very high rate and dolichyl monophosphate at a much lower rate. It does not act on phosphatidate.</p> <p>Alias Symbols: LSFR2</p> <p>Protein Interaction Partner: UBC, ELAVL1,</p> <p>Protein Size: 238</p>
Molecular Weight:	27 kDa
Gene ID:	57171
NCBI Accession:	<a href="#">NM_020438</a> , <a href="#">NP_065171</a>
UniProt:	<a href="#">Q86YN1</a>

## Application Details

Application Notes:	Optimal working dilutions should be determined experimentally by the investigator.
Comment:	Antigen size: 238 AA
Restrictions:	For Research Use only

## Handling

Format:	Liquid
Concentration:	Lot specific
Buffer:	Liquid. Purified antibody supplied in 1x PBS buffer with 0.09 % (w/v) sodium azide and 2 % sucrose.
Preservative:	Sodium azide
Precaution of Use:	This product contains Sodium azide: a POISONOUS AND HAZARDOUS SUBSTANCE which should be handled by trained staff only.
Handling Advice:	Avoid repeated freeze-thaw cycles.
Storage:	-20 °C
Storage Comment:	For short term use, store at 2-8°C up to 1 week. For long term storage, store at -20°C in small aliquots to prevent freeze-thaw cycles.



Western Blotting

**Image 1.** WB Suggested Anti-DOLPP1 Antibody Titration: 0.2-1 ug/ml Positive Control: 721\_B cell lysate DOLPP1 is supported by BioGPS gene expression data to be expressed in 721\_B