



[Go to Product page](#)

Datasheet for ABIN2783786

## anti-ATP10D antibody (Middle Region)

### 1 Image

#### Overview

Quantity:	100 µL
Target:	ATP10D
Binding Specificity:	Middle Region
Reactivity:	Human, Mouse, Cow, Rat, Rabbit, Guinea Pig, Horse, Dog, Zebrafish (Danio rerio)
Host:	Rabbit
Clonality:	Polyclonal
Conjugate:	This ATP10D antibody is un-conjugated
Application:	Western Blotting (WB)

#### Product Details

Immunogen:	The immunogen is a synthetic peptide corresponding to a region of Rat
Sequence:	YAKRGLRTLK VAKKVMSTDE YAEWLRNHFL AETSIDNREE LLVESAMRLE
Predicted Reactivity:	Cow: 100%, Dog: 93%, Guinea Pig: 100%, Horse: 100%, Human: 100%, Mouse: 100%, Rabbit: 100%, Rat: 100%, Zebrafish: 91%
Characteristics:	This is a rabbit polyclonal antibody against Atp10d. It was validated on Western Blot.
Purification:	Affinity Purified

#### Target Details

Target:	ATP10D
Alternative Name:	Atp10d ( <a href="#">ATP10D Products</a> )

## Target Details

---

Background: The function of Atp10d remains unknown.  
Alias Symbols: Atp10d  
Protein Size: 1373

---

Molecular Weight: 153 kDa

---

Gene ID: 360932

---

NCBI Accession: [XM\\_002724975](#), [XP\\_002725021](#)

---

## Application Details

---

Application Notes: Optimal working dilutions should be determined experimentally by the investigator.

---

Comment: Antigen size: 1373 AA

---

Restrictions: For Research Use only

---

## Handling

---

Format: Liquid

---

Concentration: Lot specific

---

Buffer: Liquid. Purified antibody supplied in 1x PBS buffer with 0.09 % (w/v) sodium azide and 2 % sucrose.

---

Preservative: Sodium azide

---

Precaution of Use: This product contains Sodium azide: a POISONOUS AND HAZARDOUS SUBSTANCE which should be handled by trained staff only.

---

Handling Advice: Avoid repeated freeze-thaw cycles.

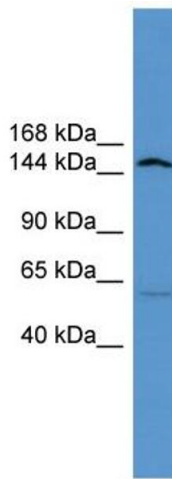
---

Storage: -20 °C

---

Storage Comment: For short term use, store at 2-8°C up to 1 week. For long term storage, store at -20°C in small aliquots to prevent freeze-thaw cycles.

---



### Western Blotting

**Image 1.** WB Suggested Anti-Atp10d Antibody Titration:  
0.2-1 ug/ml ELISA Titer: 1:312500 Positive Control: Rat Lung