

Datasheet for ABIN2783791  
**anti-ADCY2 antibody (Middle Region)**[Go to Product page](#)

## 2 Images

## Overview

Quantity:	100 µL
Target:	ADCY2
Binding Specificity:	Middle Region
Reactivity:	Human, Cow, Dog, Horse, Pig, Rabbit
Host:	Rabbit
Clonality:	Polyclonal
Conjugate:	This ADCY2 antibody is un-conjugated
Application:	Western Blotting (WB)

## Product Details

Immunogen:	The immunogen is a synthetic peptide directed towards the middle region of human ADCY2
Sequence:	FLSDSEETIP PTANTTNTSF SASNNQVAIL RAQNLFFLPY FIYSCILGLI
Predicted Reactivity:	Cow: 79%, Dog: 86%, Horse: 79%, Human: 100%, Pig: 86%, Rabbit: 79%
Characteristics:	This is a rabbit polyclonal antibody against ADCY2. It was validated on Western Blot.
Purification:	Affinity Purified

## Target Details

Target:	ADCY2
Alternative Name:	ADCY2 ( <a href="#">ADCY2 Products</a> )
Background:	This gene encodes a member of the family of adenylate cyclases, which are membrane-

## Target Details

associated enzymes that catalyze the formation of the secondary messenger cyclic adenosine monophosphate (cAMP). This enzyme is insensitive to  $\text{Ca}^{2+}$ /calmodulin, and is stimulated by the G protein beta and gamma subunit complex.

Alias Symbols: AC2, FLJ16822, FLJ45092, HBAC2, KIAA1060, MGC133314

Protein Interaction Partner: UBC, ADCY5, GNAS, ADCY1,

Protein Size: 1091

Molecular Weight: 123 kDa

Gene ID: 108

NCBI Accession: [NM\\_020546](#), [NP\\_065433](#)

UniProt: [Q08462](#)

Pathways: [EGFR Signaling Pathway](#), [Neurotrophin Signaling Pathway](#), [Thyroid Hormone Synthesis](#), [cAMP Metabolic Process](#), [Myometrial Relaxation and Contraction](#), [G-protein mediated Events](#), [Interaction of EGFR with phospholipase C-gamma](#)

## Application Details

Application Notes: Optimal working dilutions should be determined experimentally by the investigator.

Comment: Antigen size: 1091 AA

Restrictions: For Research Use only

## Handling

Format: Liquid

Concentration: Lot specific

Buffer: Liquid. Purified antibody supplied in 1x PBS buffer with 0.09 % (w/v) sodium azide and 2 % sucrose.

Preservative: Sodium azide

Precaution of Use: This product contains Sodium azide: a POISONOUS AND HAZARDOUS SUBSTANCE which should be handled by trained staff only.

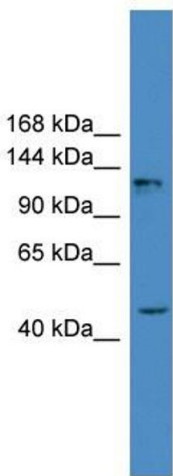
Handling Advice: Avoid repeated freeze-thaw cycles.

Storage: -20 °C

Storage Comment: For short term use, store at 2-8°C up to 1 week. For long term storage, store at -20°C in small

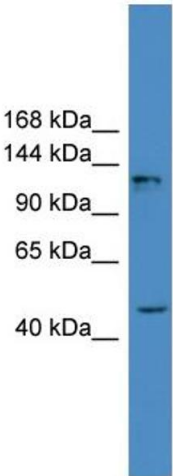
aliquots to prevent freeze-thaw cycles.

Images



**Western Blotting**

**Image 1.** WB Suggested Anti-ADCY2 Antibody Titration: 0.2-1 ug/ml ELISA Titer: 1:62500 Positive Control: 293T cell lysate There is BioGPS gene expression data showing that ADCY2 is expressed in HEK293T



**Rabbit Anti-ADCY2 Antibody**  
Catalog Number: ARP49526  
Lot Number: QC30120  
Lane: 293T Cell Lysate

Antibody Titration: 1.0µg/ml  
Gel Concentration: 6-18%

**Western Blotting**

**Image 2.** WB Suggested Anti-ADCY2 Antibody Titration: 0.2-1 µg/mL ELISA Titer: 1::2500 Positive Control:.93T cell lysate There is BioGPS gene expression data showing that ADCY2 is expressed in HEK293T