

Datasheet for ABIN2783796

## anti-MRS2 antibody (Middle Region)



[Go to Product page](#)

1 Image

1 Publication

### Overview

Quantity:	100 µL
Target:	MRS2
Binding Specificity:	Middle Region
Reactivity:	Mouse, Rat, Human, Pig, Cow, Horse, Dog, Goat, Guinea Pig, Rabbit
Host:	Rabbit
Clonality:	Polyclonal
Conjugate:	This MRS2 antibody is un-conjugated
Application:	Western Blotting (WB)

### Product Details

Immunogen:	The immunogen is a synthetic peptide directed towards the middle region of human MRS2L
Sequence:	LDALVDPKHS SVDRSKLHIL LQNGKSLSEL ETDIKIFKES ILEILDEEEL
Predicted Reactivity:	Cow: 100%, Dog: 93%, Goat: 93%, Guinea Pig: 93%, Horse: 100%, Human: 100%, Mouse: 100%, Pig: 100%, Rabbit: 93%, Rat: 100%
Characteristics:	This is a rabbit polyclonal antibody against MRS2L. It was validated on Western Blot using a cell lysate as a positive control.
Purification:	Affinity Purified

### Target Details

Target:	MRS2
---------	------

## Target Details

Alternative Name:	MRS2L ( <a href="#">MRS2 Products</a> )
Background:	<p>MRS2L is a magnesium transporter that may mediate the influx of magnesium into the mitochondrial matrix.</p> <p>Alias Symbols: HPT, MGC78523, MRS2, MRS2L</p> <p>Protein Interaction Partner: rev, UBC,</p> <p>Protein Size: 443</p>
Molecular Weight:	50 kDa
Gene ID:	57380
NCBI Accession:	<a href="#">NM_020662</a> , <a href="#">NP_065713</a>
UniProt:	<a href="#">Q9HD23</a>

## Application Details

Application Notes:	Optimal working dilutions should be determined experimentally by the investigator.
Comment:	Antigen size: 443 AA
Restrictions:	For Research Use only

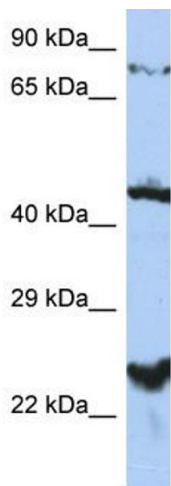
## Handling

Format:	Liquid
Concentration:	Lot specific
Buffer:	Liquid. Purified antibody supplied in 1x PBS buffer with 0.09 % (w/v) sodium azide and 2 % sucrose.
Preservative:	Sodium azide
Precaution of Use:	This product contains Sodium azide: a POISONOUS AND HAZARDOUS SUBSTANCE which should be handled by trained staff only.
Handling Advice:	Avoid repeated freeze-thaw cycles.
Storage:	-20 °C
Storage Comment:	For short term use, store at 2-8°C up to 1 week. For long term storage, store at -20°C in small aliquots to prevent freeze-thaw cycles.

Publications

Product cited in: Gerhard, Wagner, Feingold, Shenmen, Grouse, Schuler, Klein, Old, Rasooly, Good, Guyer, Peck, Derge, Lipman, Collins, Jang, Sherry, Feolo, Misquitta, Lee, Rotmistrovsky, Greenhut, Schaefer, Buetow et al.: "The status, quality, and expansion of the NIH full-length cDNA project: the Mammalian Gene Collection (MGC). ..." in: **Genome research**, Vol. 14, Issue 10B, pp. 2121-7, (2004) ([PubMed](#)).

Images



**Western Blotting**

**Image 1.** WB Suggested Anti-MRS2L Antibody Titration: 0.2-1 ug/ml ELISA Titer: 1:312500 Positive Control: PANC1 cell lysate