

Datasheet for ABIN2783814  
**anti-PCDHB16 antibody (Middle Region)**[Go to Product page](#)

## 2 Images

## Overview

Quantity:	100 µL
Target:	PCDHB16
Binding Specificity:	Middle Region
Reactivity:	Human, Rat, Mouse, Cow, Horse
Host:	Rabbit
Clonality:	Polyclonal
Conjugate:	This PCDHB16 antibody is un-conjugated
Application:	Western Blotting (WB)

## Product Details

Immunogen:	The immunogen is a synthetic peptide directed towards the middle region of human PCDHB16
Sequence:	IPENSPLGSL VATVSARDLD GGANGKISYT LFQPSEDISK TLEVNPMGTGE
Predicted Reactivity:	Cow: 100%, Horse: 100%, Human: 100%, Mouse: 100%, Rat: 92%
Characteristics:	This is a rabbit polyclonal antibody against PCDHB16. It was validated on Western Blot.
Purification:	Affinity Purified

## Target Details

Target:	PCDHB16
Alternative Name:	PCDHB16 ( <a href="#">PCDHB16 Products</a> )
Background:	This gene is a member of the protocadherin beta gene cluster, one of three related gene

## Target Details

clusters tandemly linked on chromosome five. The gene clusters demonstrate an unusual genomic organization similar to that of B-cell and T-cell receptor gene clusters. The beta cluster contains 16 genes and 3 pseudogenes, each encoding 6 extracellular cadherin domains and a cytoplasmic tail that deviates from others in the cadherin superfamily. The extracellular domains interact in a homophilic manner to specify differential cell-cell connections. Unlike the alpha and gamma clusters, the transcripts from these genes are made up of only one large exon, not sharing common 3' exons as expected. These neural cadherin-like cell adhesion proteins are integral plasma membrane proteins. Their specific functions are unknown but they most likely play a critical role in the establishment and function of specific cell-cell neural connections.

Alias Symbols: KIAA1621, ME1, PCDH-BETA16, PCDH3X, PCDHB8a

Protein Size: 776

Molecular Weight:	82 kDa
Gene ID:	57717
NCBI Accession:	<a href="#">NM_020957</a> , <a href="#">NP_066008</a>
UniProt:	<a href="#">Q9NRJ7</a>

## Application Details

Application Notes:	Optimal working dilutions should be determined experimentally by the investigator.
Comment:	Antigen size: 776 AA
Restrictions:	For Research Use only

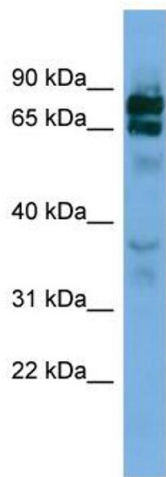
## Handling

Format:	Liquid
Concentration:	Lot specific
Buffer:	Liquid. Purified antibody supplied in 1x PBS buffer with 0.09 % (w/v) sodium azide and 2 % sucrose.
Preservative:	Sodium azide
Precaution of Use:	This product contains Sodium azide: a POISONOUS AND HAZARDOUS SUBSTANCE which should be handled by trained staff only.
Handling Advice:	Avoid repeated freeze-thaw cycles.

Handling

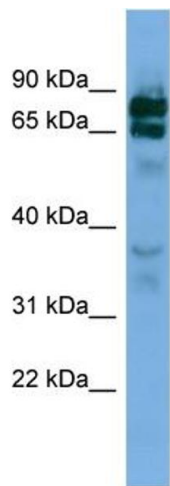
Storage:	-20 °C
Storage Comment:	For short term use, store at 2-8°C up to 1 week. For long term storage, store at -20°C in small aliquots to prevent freeze-thaw cycles.

Images



Western Blotting

**Image 1.** WB Suggested Anti-PCDHB16 Antibody Titration: 0.2-1 ug/ml ELISA Titer: 1:1562500 Positive Control: Jurkat cell lysate



Rabbit Anti-PCDHB16 Antibody  
Catalog Number: ARP49598  
Lot Number: QC29441  
Lane: Jurkat Cell Lysate

Antibody Titration: 1.0µg/ml  
Gel Concentration: 12%

Western Blotting

**Image 2.** WB Suggested Anti-PCDHB16 Antibody Titration: 0.2-1 µg/mL ELISA Titer: 1:1562500 Positive Control: Jurkat cell lysate