

Datasheet for ABIN2783821  
**anti-ANGPTL7 antibody (Middle Region)**[Go to Product page](#)

## 4 Images

## Overview

Quantity:	100 µL
Target:	ANGPTL7
Binding Specificity:	Middle Region
Reactivity:	Human, Mouse, Rat, Cow, Dog, Horse, Guinea Pig, Rabbit, Pig
Host:	Rabbit
Clonality:	Polyclonal
Conjugate:	This ANGPTL7 antibody is un-conjugated
Application:	Western Blotting (WB)

## Product Details

Immunogen:	The immunogen is a synthetic peptide directed towards the middle region of human ANGPTL7
Sequence:	NQIDIMQLQA AQTVTQTSAD AIYDCSSLYQ KNYRISGVYK LPPDDFLGSP
Predicted Reactivity:	Cow: 100%, Dog: 100%, Guinea Pig: 93%, Horse: 100%, Human: 100%, Mouse: 100%, Pig: 100%, Rabbit: 93%, Rat: 100%
Characteristics:	This is a rabbit polyclonal antibody against ANGPTL7. It was validated on Western Blot.
Purification:	Affinity Purified

## Target Details

Target:	ANGPTL7
Alternative Name:	ANGPTL7 ( <a href="#">ANGPTL7 Products</a> )

## Target Details

Background: The function of ANGPTL7 remains unknown.  
Alias Symbols: AngX, CDT6, RP4-647M16.2, dJ647M16.1  
Protein Interaction Partner: APP, ANGPTL7,  
Protein Size: 346

Molecular Weight: 40 kDa

Gene ID: 10218

NCBI Accession: [NM\\_021146](#), [NP\\_066969](#)

UniProt: [O43827](#)

## Application Details

Application Notes: Optimal working dilutions should be determined experimentally by the investigator.

Comment: Antigen size: 346 AA

Restrictions: For Research Use only

## Handling

Format: Liquid

Concentration: Lot specific

Buffer: Liquid. Purified antibody supplied in 1x PBS buffer with 0.09 % (w/v) sodium azide and 2 % sucrose.

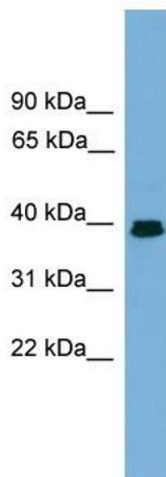
Preservative: Sodium azide

Precaution of Use: This product contains Sodium azide: a POISONOUS AND HAZARDOUS SUBSTANCE which should be handled by trained staff only.

Handling Advice: Avoid repeated freeze-thaw cycles.

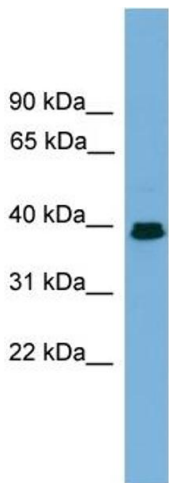
Storage: -20 °C

Storage Comment: For short term use, store at 2-8°C up to 1 week. For long term storage, store at -20°C in small aliquots to prevent freeze-thaw cycles.



**Western Blotting**

**Image 1.** WB Suggested Anti-ANGPTL7 Antibody Titration: 0.2-1 ug/ml ELISA Titer: 1:312500 Positive Control: MCF7 cell lysate



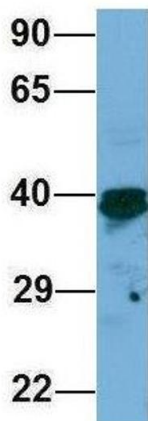
Rabbit Anti-ANGPTL7 Antibody  
Catalog Number: ARP49626  
Lot Number: QC29443  
Lane: MCF7 Cell Lysate

Antibody Titration: 1.0µg/ml  
Gel Concentration: 12%

**Western Blotting**

**Image 2.** WB Suggested Anti-ANGPTL7 Antibody Titration: 0.2-1 µg/mL ELISA Titer: 1:12500 Positive Control: MCF7 cell lysate

**ANGPTL7**



**Western Blotting**

**Image 3.** Host: Rabbit Target Name: ANGPTL7 Sample Type: 293T Antibody Dilution: 1.0ug/ml

Please check the [product details page](#) for more images. Overall 4 images are available for ABIN2783821.