

Datasheet for ABIN2783827  
**anti-CATSPERG antibody (C-Term)**[Go to Product page](#)[1 Image](#)[1 Publication](#)

## Overview

Quantity:	100 µL
Target:	CATSPERG
Binding Specificity:	C-Term
Reactivity:	Human, Guinea Pig, Rat
Host:	Rabbit
Clonality:	Polyclonal
Conjugate:	This CATSPERG antibody is un-conjugated
Application:	Western Blotting (WB)

## Product Details

Immunogen:	The immunogen is a synthetic peptide directed towards the C terminal region of human C19orf15
Sequence:	FFLIQDLVTG DSGSFQGSYV LLVVGGGPTL DSLKDYSEDE IYRFNSPLDK
Predicted Reactivity:	Guinea Pig: 86%, Human: 100%, Rat: 79%
Characteristics:	This is a rabbit polyclonal antibody against C19orf15. It was validated on Western Blot using a cell lysate as a positive control.
Purification:	Affinity Purified

## Target Details

Target:	CATSPERG
---------	----------

## Target Details

Alternative Name:	C19orf15 ( <a href="#">CATSPERG Products</a> )
Background:	<p>C19orf15 is a single-pass type I membrane protein. The exact function of C19orf15 remains unknown.</p> <p>Alias Symbols: DKFZP434A1022, FLJ38899, FLJ46353, MGC125664, C19orf15</p> <p>Protein Interaction Partner: PAXIP1, UBC,</p> <p>Protein Size: 799</p>
Molecular Weight:	92 kDa
Gene ID:	57828
NCBI Accession:	<a href="#">NM_021185</a> , <a href="#">NP_067008</a>
UniProt:	<a href="#">Q6ZRH7</a>

## Application Details

Application Notes:	Optimal working dilutions should be determined experimentally by the investigator.
Comment:	Antigen size: 799 AA
Restrictions:	For Research Use only

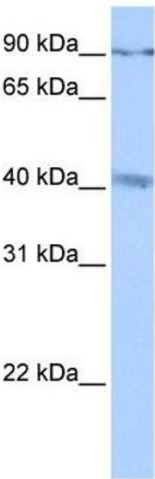
## Handling

Format:	Liquid
Concentration:	Lot specific
Buffer:	Liquid. Purified antibody supplied in 1x PBS buffer with 0.09 % (w/v) sodium azide and 2 % sucrose.
Preservative:	Sodium azide
Precaution of Use:	This product contains Sodium azide: a POISONOUS AND HAZARDOUS SUBSTANCE which should be handled by trained staff only.
Handling Advice:	Avoid repeated freeze-thaw cycles.
Storage:	-20 °C
Storage Comment:	For short term use, store at 2-8°C up to 1 week. For long term storage, store at -20°C in small aliquots to prevent freeze-thaw cycles.

Publications

Product cited in: Guha, Bandyopadhyaya, Polumuri, Chumsri, Gade, Kalvakolanu, Ahmed et al.: "Nicotine promotes apoptosis resistance of breast cancer cells and enrichment of side population cells with cancer stem cell-like properties via a signaling cascade involving galectin-3,  $\alpha 9$  nicotinic ..." in: **Breast cancer research and treatment**, Vol. 145, Issue 1, pp. 5-22, (2014) ([PubMed](#)).

Images



Western Blotting

**Image 1.** WB Suggested Anti-C19orf15 Antibody Titration:  
0.2-1 ug/ml Positive Control: MCF7 cell lysate