

Datasheet for ABIN2783830
anti-SRPRB antibody (Middle Region)

5 Images

1 Publication

[Go to Product page](#)

Overview

Quantity:	100 µL
Target:	SRPRB
Binding Specificity:	Middle Region
Reactivity:	Human, Mouse, Rat, Dog, Rabbit, Horse, Cow, Saccharomyces cerevisiae, Zebrafish (Danio rerio)
Host:	Rabbit
Clonality:	Polyclonal
Conjugate:	This SRPRB antibody is un-conjugated
Application:	Western Blotting (WB), Immunohistochemistry (IHC)

Product Details

Immunogen:	The immunogen is a synthetic peptide directed towards the middle region of human SRPRB
Sequence:	QDIAMAKSAK LIQQQLEKEL NTLRVTRSAA PSTLYSSSTA PAQLGKKGKE
Predicted Reactivity:	Cow: 93%, Dog: 100%, Horse: 100%, Human: 100%, Mouse: 100%, Rabbit: 100%, Rat: 100%, Yeast: 100%, Zebrafish: 93%
Characteristics:	This is a rabbit polyclonal antibody against SRPRB. It was validated on Western Blot using a cell lysate as a positive control.
Purification:	Affinity Purified

Target Details

Target:	SRPRB
---------	-------

Target Details

Alternative Name: SRPRB ([SRPRB Products](#))

Background: SRPRB has similarity to mouse protein which is a subunit of the signal recognition particle receptor (SR). This subunit is a transmembrane GTPase belonging to the GTPase superfamily. It anchors alpha subunit, a peripheral membrane GTPase, to the ER membrane. SR is required for the cotranslational targeting of both secretory and membrane proteins to the ER membrane. The protein encoded by this gene has similarity to mouse protein which is a subunit of the signal recognition particle receptor (SR). This subunit is a transmembrane GTPase belonging to the GTPase superfamily. It anchors alpha subunit, a peripheral membrane GTPase, to the ER membrane. SR is required for the cotranslational targeting of both secretory and membrane proteins to the ER membrane. The protein encoded by this gene has similarity to mouse protein which is a subunit of the signal recognition particle receptor (SR). This subunit is a transmembrane GTPase belonging to the GTPase superfamily. It anchors alpha subunit, a peripheral membrane GTPase, to the ER membrane. SR is required for the cotranslational targeting of both secretory and membrane proteins to the ER membrane.

Alias Symbols: APMCF1

Protein Interaction Partner: ERLIN2, UBC, STAU1, MDM2, FBXO6, PPP6R1, ADRB2, LMNA, UBL4A, CA9, UBE2L3, TAGLN, SPR, SNRPC, S100A10, RRBP1, RPL38, RFX5, RBMS1, PIN4, PFN1, ACAA1, TMED4, TMEM65, RPS10P5, MRRF, SARNP, NABP2, MRPL14, TMBIM1, SUGP1, SBDS, MRPS28, TARDBP, TOMM40, UBE4B, SF3

Protein Size: 271

Molecular Weight: 30 kDa

Gene ID: 58477

NCBI Accession: [NM_021203](#), [NP_067026](#)

UniProt: [Q9Y5M8](#)

Pathways: [ER-Nucleus Signaling](#)

Application Details

Application Notes: Optimal working dilutions should be determined experimentally by the investigator.

Comment: Antigen size: 271 AA

Restrictions: For Research Use only

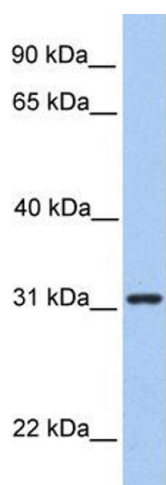
Handling

Format:	Liquid
Concentration:	Lot specific
Buffer:	Liquid. Purified antibody supplied in 1x PBS buffer with 0.09 % (w/v) sodium azide and 2 % sucrose.
Preservative:	Sodium azide
Precaution of Use:	This product contains Sodium azide: a POISONOUS AND HAZARDOUS SUBSTANCE which should be handled by trained staff only.
Handling Advice:	Avoid repeated freeze-thaw cycles.
Storage:	-20 °C
Storage Comment:	For short term use, store at 2-8°C up to 1 week. For long term storage, store at -20°C in small aliquots to prevent freeze-thaw cycles.

Publications

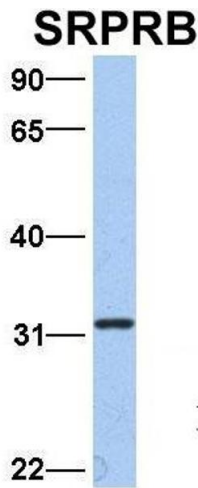
Product cited in:	Guha, Bandyopadhyaya, Polumuri, Chumsri, Gade, Kalvakolanu, Ahmed et al.: "Nicotine promotes apoptosis resistance of breast cancer cells and enrichment of side population cells with cancer stem cell-like properties via a signaling cascade involving galectin-3, $\alpha 9$ nicotinic ..." in: Breast cancer research and treatment , Vol. 145, Issue 1, pp. 5-22, (2014) (PubMed).
-------------------	--

Images



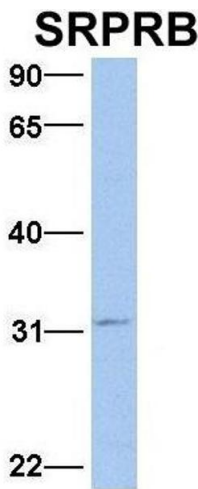
Western Blotting

Image 1. WB Suggested Anti-SRPRB Antibody Titration: 0.2-1 ug/ml Positive Control: HeLa cell lysate SRPRB is supported by BioGPS gene expression data to be expressed in HeLa



Western Blotting

Image 2. Host: Rabbit Target Name: SRPRB Sample Type: HeLa Antibody Dilution: 1.0ug/ml SRPRB is supported by BioGPS gene expression data to be expressed in HeLa



Western Blotting

Image 3. Host: Rabbit Target Name: SRPRB Sample Type: Jurkat Antibody Dilution: 1.0ug/ml SRPRB is supported by BioGPS gene expression data to be expressed in Jurkat

Please check the [product details page](#) for more images. Overall 5 images are available for ABIN2783830.