

Datasheet for ABIN2783835

anti-IL22 Receptor alpha 1 antibody (Middle Region)



[Go to Product page](#)

1 Image

Overview

Quantity:	100 µL
Target:	IL22 Receptor alpha 1 (IL22RA1)
Binding Specificity:	Middle Region
Reactivity:	Human, Mouse, Rat, Dog, Guinea Pig, Pig, Rabbit, Horse
Host:	Rabbit
Clonality:	Polyclonal
Conjugate:	This IL22 Receptor alpha 1 antibody is un-conjugated
Application:	Western Blotting (WB)

Product Details

Immunogen:	The immunogen is a synthetic peptide directed towards the middle region of human IL22RA1
Sequence:	YRYVTKPPAP PNSLNVQRVL TFQPLRFIQE HVLIPVFDLS GPSSLAQPVQ
Predicted Reactivity:	Dog: 100%, Guinea Pig: 93%, Horse: 93%, Human: 100%, Mouse: 100%, Pig: 100%, Rabbit: 86%, Rat: 100%
Characteristics:	This is a rabbit polyclonal antibody against IL22RA1. It was validated on Western Blot using a cell lysate as a positive control.
Purification:	Affinity Purified

Target Details

Target:	IL22 Receptor alpha 1 (IL22RA1)
---------	---------------------------------

Target Details

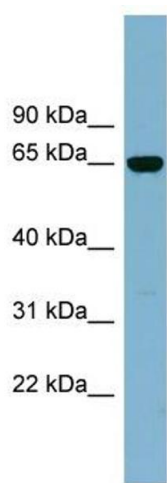
Alternative Name:	IL22RA1 (IL22RA1 Products)
Background:	<p>IL22RA1 belongs to the class II cytokine receptor family, and has been shown to be a receptor for interleukin 22 (IL22). IL22 receptor is a protein complex that consists of this protein and interleukin 10 receptor, beta (IL10BR/CRFB4), a subunit also shared with interleukin 10 receptor, alpha (IL10RA/CRFB1).</p> <p>Alias Symbols: CRF2-9, IL22R, IL22R1</p> <p>Protein Interaction Partner: STAT3, IL22,</p> <p>Protein Size: 574</p>
Molecular Weight:	63 kDa
Gene ID:	58985
NCBI Accession:	NM_021258 , NP_067081
UniProt:	Q8N6P7

Application Details

Application Notes:	Optimal working dilutions should be determined experimentally by the investigator.
Comment:	Antigen size: 574 AA
Restrictions:	For Research Use only

Handling

Format:	Liquid
Concentration:	Lot specific
Buffer:	Liquid. Purified antibody supplied in 1x PBS buffer with 0.09 % (w/v) sodium azide and 2 % sucrose.
Preservative:	Sodium azide
Precaution of Use:	This product contains Sodium azide: a POISONOUS AND HAZARDOUS SUBSTANCE which should be handled by trained staff only.
Handling Advice:	Avoid repeated freeze-thaw cycles.
Storage:	-20 °C
Storage Comment:	For short term use, store at 2-8°C up to 1 week. For long term storage, store at -20°C in small aliquots to prevent freeze-thaw cycles.



Western Blotting

Image 1. WB Suggested Anti-IL22RA1 Antibody Titration:
0.2-1 ug/ml ELISA Titer: 1:1562500 Positive Control: Human
kidney