



[Go to Product page](#)

Datasheet for ABIN2783843

anti-ELOVL5 antibody (N-Term)

5 Images

Overview

Quantity:	100 µL
Target:	ELOVL5
Binding Specificity:	N-Term
Reactivity:	Human, Rat, Mouse, Rabbit, Guinea Pig, Cow, Dog, Goat, Horse, Pig
Host:	Rabbit
Clonality:	Polyclonal
Conjugate:	This ELOVL5 antibody is un-conjugated
Application:	Western Blotting (WB)

Product Details

Immunogen:	The immunogen is a synthetic peptide directed towards the N terminal region of human ELOVL5
Sequence:	EHF D ASLSTY FKALLGPRDT RVK G WFLLDN YIPTFICSVI YLLIVWL G PK
Predicted Reactivity:	Cow: 92%, Dog: 93%, Goat: 92%, Guinea Pig: 85%, Horse: 79%, Human: 100%, Mouse: 100%, Pig: 92%, Rabbit: 100%, Rat: 93%
Characteristics:	This is a rabbit polyclonal antibody against ELOVL5. It was validated on Western Blot using a cell lysate as a positive control.
Purification:	Affinity Purified

Target Details

Target:	ELOVL5
---------	--------

Target Details

Alternative Name:	ELOVL5 (ELOVL5 Products)
Background:	<p>ELOVL5 plays a role in elongation of long-chain polyunsaturated fatty acids. ELOVL5 plays a role in elongation of long-chain polyunsaturated fatty acids (Leonard et al., 2000 [PubMed 10970790]). [supplied by OMIM]. PRIMARYREFSEQ_SPAN PRIMARY_IDENTIFIER PRIMARY_SPAN COMP 1-3003 AF338241.1 9-3011</p> <p>Alias Symbols: HELO1, RP3-483K16.1, dJ483K16.1</p> <p>Protein Interaction Partner: UBC, CERS2, ELAVL1,</p> <p>Protein Size: 299</p>
Molecular Weight:	35 kDa
Gene ID:	60481
NCBI Accession:	NM_021814 , NP_068586
UniProt:	Q9NYP7

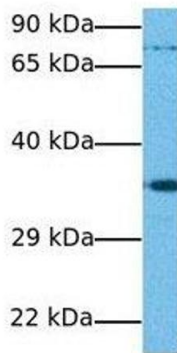
Application Details

Application Notes:	Optimal working dilutions should be determined experimentally by the investigator.
Comment:	Antigen size: 299 AA
Restrictions:	For Research Use only

Handling

Format:	Liquid
Concentration:	Lot specific
Buffer:	Liquid. Purified antibody supplied in 1x PBS buffer with 0.09 % (w/v) sodium azide and 2 % sucrose.
Preservative:	Sodium azide
Precaution of Use:	This product contains Sodium azide: a POISONOUS AND HAZARDOUS SUBSTANCE which should be handled by trained staff only.
Handling Advice:	Avoid repeated freeze-thaw cycles.
Storage:	-20 °C
Storage Comment:	For short term use, store at 2-8°C up to 1 week. For long term storage, store at -20°C in small aliquots to prevent freeze-thaw cycles.

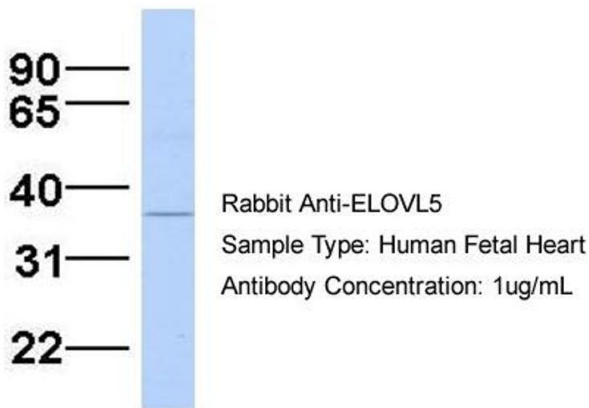
ELOVL5



Western Blotting

Image 1. Host: Rabbit Target Name: ELOVL5 Sample Tissue: Human Jurkat Antibody Dilution: 1.0ug/ml

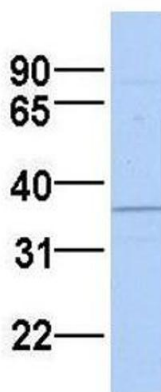
ELOVL5



Western Blotting

Image 2. Host: Rabbit Target Name: ELOVL5 Sample Type: Human Fetal Heart Antibody Dilution: 1.0ug/ml

ELOVL5



Western Blotting

Image 3. Host: Rabbit Target Name: ELOVL5 Sample Type: MCF7 Antibody Dilution: 1.0ug/ml There is BioGPS gene expression data showing that ELOVL5 is expressed in MCF7

Please check the [product details page](#) for more images. Overall 5 images are available for ABIN2783843.