



[Go to Product page](#)

Datasheet for ABIN2783845  
**anti-CCDC90B antibody (Middle Region)**

1 Image

### Overview

Quantity:	100 µL
Target:	CCDC90B
Binding Specificity:	Middle Region
Reactivity:	Human, Mouse, Rat, Rabbit, Dog, Guinea Pig, Horse, Zebrafish (Danio rerio), Cow
Host:	Rabbit
Clonality:	Polyclonal
Conjugate:	This CCDC90B antibody is un-conjugated
Application:	Western Blotting (WB)

### Product Details

Immunogen:	The immunogen is a synthetic peptide directed towards the middle region of Rat Ccdc90b
Sequence:	VKQQLINETS RIRADNRLDI NLERSRVTDM FTDQEKQLME ATNEFTKKDM
Predicted Reactivity:	Cow: 100%, Dog: 100%, Guinea Pig: 100%, Horse: 100%, Human: 100%, Mouse: 100%, Rabbit: 100%, Rat: 100%, Zebrafish: 100%
Characteristics:	This is a rabbit polyclonal antibody against Ccdc90b. It was validated on Western Blot.
Purification:	Affinity Purified

### Target Details

Target:	CCDC90B
Alternative Name:	Ccdc90b ( <a href="#">CCDC90B Products</a> )

## Target Details

---

Background: The function of this protein remains unknown.  
Alias Symbols: MGC114546, RGD1308637  
Protein Size: 256

---

Molecular Weight: 28 kDa

---

Gene ID: 308820

---

NCBI Accession: [NM\\_001024885](#), [NP\\_001020056](#)

---

UniProt: [Q4V897](#)

---

## Application Details

---

Application Notes: Optimal working dilutions should be determined experimentally by the investigator.

---

Comment: Antigen size: 256 AA

---

Restrictions: For Research Use only

---

## Handling

---

Format: Liquid

---

Concentration: Lot specific

---

Buffer: Liquid. Purified antibody supplied in 1x PBS buffer with 0.09 % (w/v) sodium azide and 2 % sucrose.

---

Preservative: Sodium azide

---

Precaution of Use: This product contains Sodium azide: a POISONOUS AND HAZARDOUS SUBSTANCE which should be handled by trained staff only.

---

Handling Advice: Avoid repeated freeze-thaw cycles.

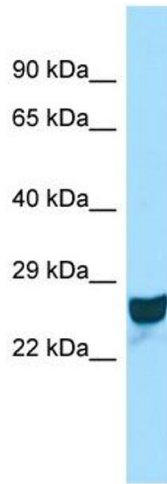
---

Storage: -20 °C

---

Storage Comment: For short term use, store at 2-8°C up to 1 week. For long term storage, store at -20°C in small aliquots to prevent freeze-thaw cycles.

---



### Western Blotting

**Image 1.** Host: Rabbit Target Name: Ccdc90b Sample Type: Rat Spleen lysates Antibody Dilution: 1.0ug/ml