

Datasheet for ABIN2783856
anti-XYLT1 antibody (Middle Region)[Go to Product page](#)

2 Images

Overview

Quantity:	100 µL
Target:	XYLT1
Binding Specificity:	Middle Region
Reactivity:	Human, Mouse, Rat, Rabbit, Cow, Zebrafish (Danio rerio), Dog, Guinea Pig, Horse
Host:	Rabbit
Clonality:	Polyclonal
Conjugate:	This XYLT1 antibody is un-conjugated
Application:	Western Blotting (WB)

Product Details

Immunogen:	The immunogen is a synthetic peptide directed towards the middle region of human XYLT1
Sequence:	RITNWNRLKG CKCQYKHIVD WCGCSPNDFK PQDFHRFQQT ARPTFFARKF
Predicted Reactivity:	Cow: 100%, Dog: 100%, Guinea Pig: 100%, Horse: 100%, Human: 100%, Mouse: 100%, Rabbit: 100%, Rat: 100%, Zebrafish: 79%
Characteristics:	This is a rabbit polyclonal antibody against XYLT1. It was validated on Western Blot.
Purification:	Affinity Purified

Target Details

Target:	XYLT1
Alternative Name:	XYLT1 (XYLT1 Products)

Target Details

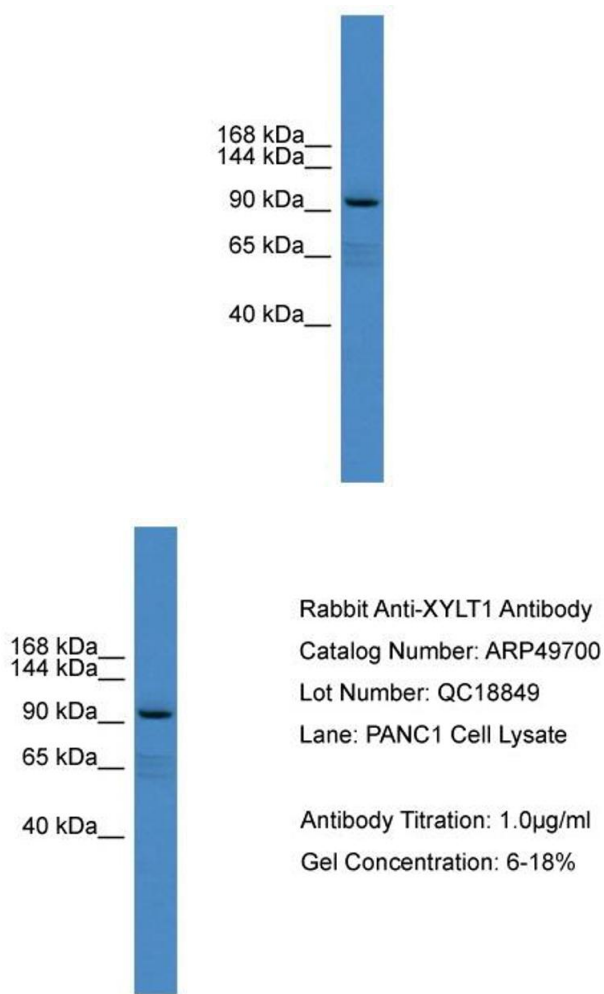
Background:	<p>This locus encodes a xylosyltransferase enzyme. The encoded protein catalyzes transfer of UDP-xylose to serine residues of an acceptor protein substrate. This transfer reaction is necessary for biosynthesis of glycosaminoglycan chains. Mutations in this gene have been associated with increased severity of pseudoxanthoma elasticum.</p> <p>Alias Symbols: PXYLTI, XT-I, XT1, XTI, XYLTI</p> <p>Protein Interaction Partner: MYC,</p> <p>Protein Size: 959</p>
Molecular Weight:	107 kDa
Gene ID:	64131
NCBI Accession:	NM_022166 , NP_071449
UniProt:	Q86Y38
Pathways:	Glycosaminoglycan Metabolic Process

Application Details

Application Notes:	Optimal working dilutions should be determined experimentally by the investigator.
Comment:	Antigen size: 959 AA
Restrictions:	For Research Use only

Handling

Format:	Liquid
Concentration:	Lot specific
Buffer:	Liquid. Purified antibody supplied in 1x PBS buffer with 0.09 % (w/v) sodium azide and 2 % sucrose.
Preservative:	Sodium azide
Precaution of Use:	This product contains Sodium azide: a POISONOUS AND HAZARDOUS SUBSTANCE which should be handled by trained staff only.
Handling Advice:	Avoid repeated freeze-thaw cycles.
Storage:	-20 °C
Storage Comment:	For short term use, store at 2-8°C up to 1 week. For long term storage, store at -20°C in small aliquots to prevent freeze-thaw cycles.



Western Blotting

Image 1. WB Suggested Anti-XYLT1 Antibody Titration: 0.2-1 ug/ml ELISA Titer: 1:312500 Positive Control: PANC1 cell lysate

Western Blotting

Image 2. WB Suggested Anti-XYLT1 Antibody Titration: 0.2-1 µg/mL ELISA Titer: 1::12500 Positive Control: PANC1 cell lysate