

Datasheet for ABIN2783857
anti-XYLT2 antibody (Middle Region)[Go to Product page](#)

1 Image

Overview

Quantity:	100 µL
Target:	XYLT2
Binding Specificity:	Middle Region
Reactivity:	Mouse, Human, Rat, Dog, Rabbit, Horse, Cow, Guinea Pig, Pig
Host:	Rabbit
Clonality:	Polyclonal
Conjugate:	This XYLT2 antibody is un-conjugated
Application:	Western Blotting (WB)

Product Details

Immunogen:	The immunogen is a synthetic peptide directed towards the middle region of human XYLT2
Sequence:	PMGTPLCRFE PRGLPSSVHL YFYDDHFQGY LVTQAVQPSA QGPAETLEMW
Predicted Reactivity:	Cow: 93%, Dog: 100%, Guinea Pig: 92%, Horse: 100%, Human: 100%, Mouse: 100%, Pig: 100%, Rabbit: 100%, Rat: 100%
Characteristics:	This is a rabbit polyclonal antibody against XYLT2. It was validated on Western Blot using a cell lysate as a positive control.
Purification:	Affinity Purified

Target Details

Target:	XYLT2
---------	-------

Target Details

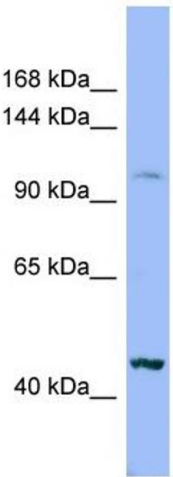
Alternative Name:	XYLT2 (XYLT2 Products)
Background:	<p>XYLT2 is an isoform of xylosyltransferase, which belongs to a family of glycosyltransferases. This enzyme transfers xylose from UDP-xylose to specific serine residues of the core protein and initiates the biosynthesis of glycosaminoglycan chains in proteo</p> <p>Alias Symbols: XT-II, XT2, xylT-II, PXYLT2</p> <p>Protein Size: 865</p>
Molecular Weight:	97 kDa
Gene ID:	64132
NCBI Accession:	NM_022167 , NP_071450
UniProt:	Q9H1B5
Pathways:	Glycosaminoglycan Metabolic Process

Application Details

Application Notes:	Optimal working dilutions should be determined experimentally by the investigator.
Comment:	Antigen size: 865 AA
Restrictions:	For Research Use only

Handling

Format:	Liquid
Concentration:	Lot specific
Buffer:	Liquid. Purified antibody supplied in 1x PBS buffer with 0.09 % (w/v) sodium azide and 2 % sucrose.
Preservative:	Sodium azide
Precaution of Use:	This product contains Sodium azide: a POISONOUS AND HAZARDOUS SUBSTANCE which should be handled by trained staff only.
Handling Advice:	Avoid repeated freeze-thaw cycles.
Storage:	-20 °C
Storage Comment:	For short term use, store at 2-8°C up to 1 week. For long term storage, store at -20°C in small aliquots to prevent freeze-thaw cycles.



Western Blotting

Image 1. WB Suggested Anti-XYLT2 Antibody Titration: 0.2-1 ug/ml ELISA Titer: 1:312500 Positive Control: HT1080 cell lysate