



Datasheet for ABIN2783860
anti-C11orf24 antibody (N-Term)



[Go to Product page](#)

2 Images

Overview

Quantity:	100 µL
Target:	C11orf24
Binding Specificity:	N-Term
Reactivity:	Human
Host:	Rabbit
Clonality:	Polyclonal
Conjugate:	This C11orf24 antibody is un-conjugated
Application:	Western Blotting (WB), Immunohistochemistry (IHC)

Product Details

Immunogen:	The immunogen is a synthetic peptide directed towards the N terminal region of human C11orf24
Sequence:	SPVTLTKGTS AAHLNSMEVT TEDTSRTDVS EPATSGGAAD GVTSIAPTAV
Predicted Reactivity:	Human: 100%
Characteristics:	This is a rabbit polyclonal antibody against C11orf24. It was validated on Western Blot using a cell lysate as a positive control.
Purification:	Affinity Purified

Target Details

Target:	C11orf24
---------	----------

Target Details

Alternative Name: C11orf24 ([C11orf24 Products](#))

Background: The function remains unknown.
Alias Symbols: DM4E3
Protein Size: 449

Molecular Weight: 46 kDa

Gene ID: 53838

NCBI Accession: [NM_022338](#), [NP_071733](#)

UniProt: [Q96F05](#)

Application Details

Application Notes: Optimal working dilutions should be determined experimentally by the investigator.

Comment: Antigen size: 449 AA

Restrictions: For Research Use only

Handling

Format: Liquid

Concentration: Lot specific

Buffer: Liquid. Purified antibody supplied in 1x PBS buffer with 0.09 % (w/v) sodium azide and 2 % sucrose.

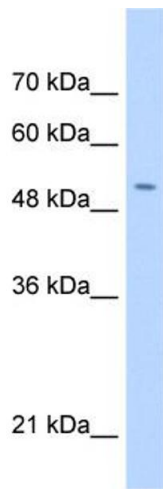
Preservative: Sodium azide

Precaution of Use: This product contains Sodium azide: a POISONOUS AND HAZARDOUS SUBSTANCE which should be handled by trained staff only.

Handling Advice: Avoid repeated freeze-thaw cycles.

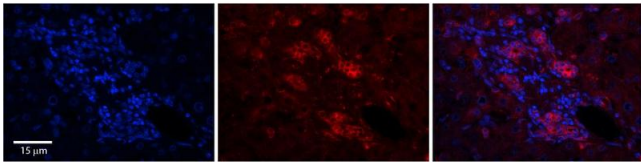
Storage: -20 °C

Storage Comment: For short term use, store at 2-8°C up to 1 week. For long term storage, store at -20°C in small aliquots to prevent freeze-thaw cycles.



Western Blotting

Image 1. WB Suggested Anti-C11orf24 Antibody Titration: 0.2-1 ug/ml Positive Control: HepG2 cell lysate C11orf24 is strongly supported by BioGPS gene expression data to be expressed in Human HepG2 cells



Immunohistochemistry

Image 2. Rabbit Anti-C11orf24 Antibody Formalin Fixed Paraffin Embedded Tissue: Human Adult Liver Observed Staining: Membrane but only in connective tissue cells in the interlobular septum, very low tissue distribution Primary Antibody Concentration: 1:100 Secondary Antibody: Donkey anti-Rabbit-Cy3 Secondary Antibody Concentration: 1:200 Magnification: 20X Exposure Time: 0.5 – 2.0 sec Protocol located in Reviews and Data.