

Datasheet for ABIN2783862
anti-POPDC3 antibody (C-Term)[Go to Product page](#)

2 Images

Overview

Quantity:	100 µL
Target:	POPDC3
Binding Specificity:	C-Term
Reactivity:	Human, Mouse, Rat, Cow, Rabbit, Dog, Guinea Pig, Horse, Zebrafish (Danio rerio)
Host:	Rabbit
Clonality:	Polyclonal
Conjugate:	This POPDC3 antibody is un-conjugated
Application:	Western Blotting (WB)

Product Details

Immunogen:	The immunogen is a synthetic peptide directed towards the C terminal region of human POPDC3
Sequence:	YLLFAQHRYI SRLFSVLIGS DIADKLYALN DRVYIGKRYH YDIRLPNFYQ
Predicted Reactivity:	Cow: 100%, Dog: 100%, Guinea Pig: 100%, Horse: 100%, Human: 100%, Mouse: 100%, Rabbit: 100%, Rat: 100%, Zebrafish: 92%
Characteristics:	This is a rabbit polyclonal antibody against POPDC3. It was validated on Western Blot using a cell lysate as a positive control.
Purification:	Affinity Purified

Target Details

Target:	POPDC3
---------	--------

Target Details

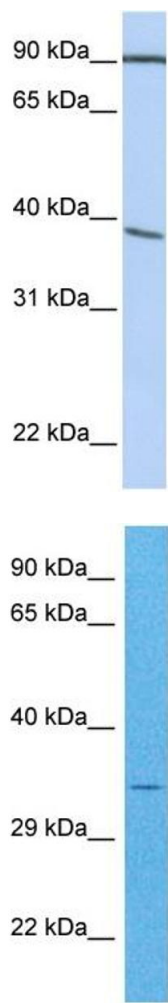
Alternative Name:	POPDC3 (POPDC3 Products)
Background:	<p>POPDC3 is a member of the POP family of proteins containing three putative transmembrane domains. The protein is expressed in cardiac and skeletal muscle and may play an important role in these tissues during development. This gene encodes a member of the POP family of proteins containing three putative transmembrane domains. This gene is expressed in cardiac and skeletal muscle and may play an important role in these tissues during development.</p> <p>Alias Symbols: MGC22671, POP3, bA355M14.1, RP11-99L11.2</p> <p>Protein Size: 291</p>
Molecular Weight:	34 kDa
Gene ID:	64208
NCBI Accession:	NM_022361 , NP_071756
UniProt:	Q9HBV1

Application Details

Application Notes:	Optimal working dilutions should be determined experimentally by the investigator.
Comment:	Antigen size: 291 AA
Restrictions:	For Research Use only

Handling

Format:	Liquid
Concentration:	Lot specific
Buffer:	Liquid. Purified antibody supplied in 1x PBS buffer with 0.09 % (w/v) sodium azide and 2 % sucrose.
Preservative:	Sodium azide
Precaution of Use:	This product contains Sodium azide: a POISONOUS AND HAZARDOUS SUBSTANCE which should be handled by trained staff only.
Handling Advice:	Avoid repeated freeze-thaw cycles.
Storage:	-20 °C
Storage Comment:	For short term use, store at 2-8°C up to 1 week. For long term storage, store at -20°C in small aliquots to prevent freeze-thaw cycles.



Western Blotting

Image 1. WB Suggested Anti-POPDC3 Antibody Titration:
0.2-1 ug/ml Positive Control: HepG2 cell lysate

Western Blotting

Image 2. Host: Rabbit Target Name: POPDC3 Sample
Tissue: Human HCT116 Whole Cell Antibody Dilution:
1ug/ml