



[Go to Product page](#)

Datasheet for ABIN2783869
anti-RHBDF1 antibody (N-Term)

4 Images

Overview

Quantity:	100 µL
Target:	RHBDF1
Binding Specificity:	N-Term
Reactivity:	Human, Mouse, Rat, Horse, Cow, Dog, Rabbit, Guinea Pig, Zebrafish (Danio rerio)
Host:	Rabbit
Clonality:	Polyclonal
Conjugate:	This RHBDF1 antibody is un-conjugated
Application:	Western Blotting (WB)

Product Details

Immunogen:	The immunogen is a synthetic peptide directed towards the N terminal region of human RHBDF1
Sequence:	KDWEKAPEQA DLTGGALDRS ELERSHLMLP LERGWRKQKE GAAAPQPKVR
Predicted Reactivity:	Cow: 100%, Dog: 100%, Guinea Pig: 100%, Horse: 100%, Human: 100%, Mouse: 100%, Rabbit: 100%, Rat: 100%, Zebrafish: 79%
Characteristics:	This is a rabbit polyclonal antibody against RHBDF1. It was validated on Western Blot using a cell lysate as a positive control.
Purification:	Affinity Purified

Target Details

Target:	RHBDF1
---------	--------

Target Details

Alternative Name:	RHBDF1 (RHBDF1 Products)
Background:	<p>RHBDF1 is a seven-transmembrane protein with a long N-terminal cytoplasmic extension that comprises half of the polypeptide sequence, and is found in the endoplasmic reticulum and Golgi, but not on the cell surface. RHBDF1 has a pivotal role in sustaining growth signals in epithelial cancer cells and thus may serve as a therapeutic target for treating epithelial cancers.</p> <p>Alias Symbols: C16orf8, Dist1, EGFR-RS, FLJ2235, FLJ22357, gene -89, gene -90, hDist1, gene-89, gene-90</p> <p>Protein Interaction Partner: UBC, TGFA,</p> <p>Protein Size: 855</p>
Molecular Weight:	97 kDa
Gene ID:	64285
NCBI Accession:	NM_022450 , NP_071895
UniProt:	Q96CC6
Pathways:	EGFR Signaling Pathway , Growth Factor Binding

Application Details

Application Notes:	Optimal working dilutions should be determined experimentally by the investigator.
Comment:	Antigen size: 855 AA
Restrictions:	For Research Use only

Handling

Format:	Liquid
Concentration:	Lot specific
Buffer:	Liquid. Purified antibody supplied in 1x PBS buffer with 0.09 % (w/v) sodium azide and 2 % sucrose.
Preservative:	Sodium azide
Precaution of Use:	This product contains Sodium azide: a POISONOUS AND HAZARDOUS SUBSTANCE which should be handled by trained staff only.
Handling Advice:	Avoid repeated freeze-thaw cycles.
Storage:	-20 °C

Handling

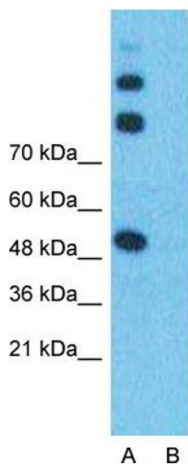
Storage Comment: For short term use, store at 2-8°C up to 1 week. For long term storage, store at -20°C in small aliquots to prevent freeze-thaw cycles.

Images



Western Blotting

Image 1. WB Suggested Anti-RHBDF1 Antibody Titration: 0.2-1 ug/ml ELISA Titer: 1:62500 Positive Control: 721_B cell lysate



Anti-RHBDF1 Western Blot & Peptide Block Validation

Lot Number: QC19276

Lysate: 721_B Cell

Lane A: Primary Antibody
Lane B: Primary Antibody + Blocking Peptide

Primary Antibody Concentration: 1.0 µg/ml
Peptide Concentration: 5.0 µg/ml
Lysate Quantity: 25 µg/lane
Gel Concentration: 12%

Western Blotting

Image 2. Host: Rabbit Target Name: RHBDF1 Sample Type: 721_B Whole Cell Lane A: Primary Antibody Lane B: Primary Antibody + Blocking Peptide Primary Antibody Concentration: 1ug/ml Peptide Concentration: 5ug/ml Lysate Quantity: 25ug/lane/Lane Gel Concentration: 0.12



Western Blotting

Image 3. Host: Rabbit Target Name: RHBDF1 Sample Tissue: Human PANC1 Whole Cell Antibody Dilution: 1ug/ml

Please check the [product details page](#) for more images. Overall 4 images are available for ABIN2783869.