

Datasheet for ABIN2783871
anti-CHST8 antibody (Middle Region)[Go to Product page](#)

4 Images

Overview

Quantity:	100 µL
Target:	CHST8
Binding Specificity:	Middle Region
Reactivity:	Human, Mouse, Rat, Rabbit, Cow, Dog, Guinea Pig, Horse
Host:	Rabbit
Clonality:	Polyclonal
Conjugate:	This CHST8 antibody is un-conjugated
Application:	Western Blotting (WB)

Product Details

Immunogen:	The immunogen is a synthetic peptide directed towards the middle region of human CHST8
Sequence:	GCSNWKRVLMLAGLASSTA DIQHNTVHYG SALKRLDTFD RQGILHRLST
Predicted Reactivity:	Cow: 86%, Dog: 100%, Guinea Pig: 100%, Horse: 100%, Human: 100%, Mouse: 100%, Rabbit: 86%, Rat: 100%
Characteristics:	This is a rabbit polyclonal antibody against CHST8. It was validated on Western Blot using a cell lysate as a positive control.
Purification:	Affinity Purified

Target Details

Target:	CHST8
---------	-------

Target Details

Alternative Name:	CHST8 (CHST8 Products)
Background:	<p>Sulfate groups in carbohydrates confer highly specific functions on glycoproteins, glycolipids, and proteoglycans and are critical for cell-cell interaction, signal transduction, and embryonic development. Sulfotransferases, such as CHST8, carry out sulfation of carbohydrates. Sulfate groups in carbohydrates confer highly specific functions on glycoproteins, glycolipids, and proteoglycans and are critical for cell-cell interaction, signal transduction, and embryonic development. Sulfotransferases, such as CHST8, carry out sulfation of carbohydrates (Hiraoka et al., 2001 [PubMed 11445554]). [supplied by OMIM].</p> <p>Alias Symbols: GalNAc4ST, GALNAC4ST1</p> <p>Protein Size: 424</p>
Molecular Weight:	49 kDa
Gene ID:	64377
NCBI Accession:	NM_022467 , NP_071912
UniProt:	Q9H2A9

Application Details

Application Notes:	Optimal working dilutions should be determined experimentally by the investigator.
Comment:	Antigen size: 424 AA
Restrictions:	For Research Use only

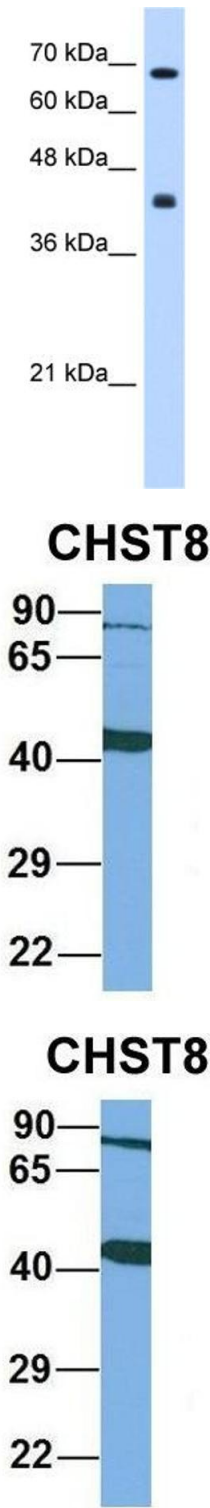
Handling

Format:	Liquid
Concentration:	Lot specific
Buffer:	Liquid. Purified antibody supplied in 1x PBS buffer with 0.09 % (w/v) sodium azide and 2 % sucrose.
Preservative:	Sodium azide
Precaution of Use:	This product contains Sodium azide: a POISONOUS AND HAZARDOUS SUBSTANCE which should be handled by trained staff only.
Handling Advice:	Avoid repeated freeze-thaw cycles.
Storage:	-20 °C

Handling

Storage Comment: For short term use, store at 2-8°C up to 1 week. For long term storage, store at -20°C in small aliquots to prevent freeze-thaw cycles.

Images



Western Blotting

Image 1. WB Suggested Anti-CHST8 Antibody Titration: 0.2-1 ug/ml Positive Control: HepG2 cell lysate

Western Blotting

Image 2. Host: Rabbit Target Name: CHST8 Sample Type: Human Fetal Liver Antibody Dilution: 1.0ug/ml

Western Blotting

Image 3. Host: Rabbit Target Name: CHST8 Sample Type: Human Adult Placenta Antibody Dilution: 1.0ug/ml

Please check the [product details page](#) for more images. Overall 4 images are available for ABIN2783871.