

Datasheet for ABIN2783878
anti-LPPR2 antibody (Middle Region)

2 Images

[Go to Product page](#)

Overview

Quantity:	100 µL
Target:	LPPR2
Binding Specificity:	Middle Region
Reactivity:	Human, Mouse, Rat, Cow, Dog, Horse, Pig, Rabbit
Host:	Rabbit
Clonality:	Polyclonal
Conjugate:	This LPPR2 antibody is un-conjugated
Application:	Western Blotting (WB)

Product Details

Immunogen:	The immunogen is a synthetic peptide directed towards the middle region of human LPPR2
Sequence:	NYTALGCLPP SPDRPGPDRF VTDQGACAGS PSLVAAARRA FPCKDAALCA
Predicted Reactivity:	Cow: 100%, Dog: 100%, Horse: 100%, Human: 100%, Mouse: 100%, Pig: 100%, Rabbit: 100%, Rat: 100%
Characteristics:	This is a rabbit polyclonal antibody against LPPR2. It was validated on Western Blot using a cell lysate as a positive control.
Purification:	Affinity Purified

Target Details

Target:	LPPR2
---------	-------

Target Details

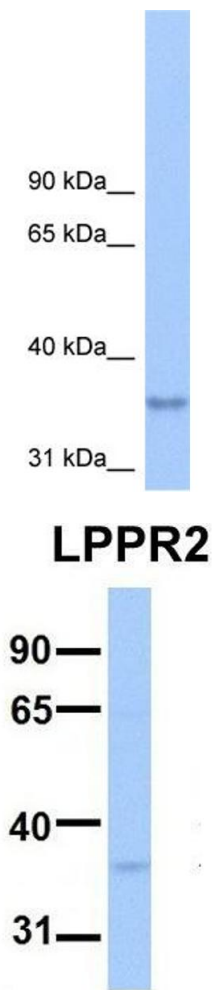
Alternative Name:	LPPR2 (LPPR2 Products)
Background:	<p>LPPR2 is a multi-pass membrane protein and belongs to the PA-phosphatase related phosphoesterase family. LPPR2 shows dynamic expression regulation during brain development and neuronal excitation.</p> <p>Alias Symbols: DKFZp761E1121, FLJ13055, PRG-4, PRG4</p> <p>Protein Size: 343</p>
Molecular Weight:	37 kDa
Gene ID:	64748
NCBI Accession:	NM_022737 , NP_073574
UniProt:	Q96GM1

Application Details

Application Notes:	Optimal working dilutions should be determined experimentally by the investigator.
Comment:	Antigen size: 343 AA
Restrictions:	For Research Use only

Handling

Format:	Liquid
Concentration:	Lot specific
Buffer:	Liquid. Purified antibody supplied in 1x PBS buffer with 0.09 % (w/v) sodium azide and 2 % sucrose.
Preservative:	Sodium azide
Precaution of Use:	This product contains Sodium azide: a POISONOUS AND HAZARDOUS SUBSTANCE which should be handled by trained staff only.
Handling Advice:	Avoid repeated freeze-thaw cycles.
Storage:	-20 °C
Storage Comment:	For short term use, store at 2-8°C up to 1 week. For long term storage, store at -20°C in small aliquots to prevent freeze-thaw cycles.



Western Blotting

Image 1. WB Suggested Anti-LPPR2 Antibody Titration: 0.2-1 ug/ml Positive Control: Hela cell lysate

Western Blotting

Image 2. Host: Rabbit Target Name: LPPR2 Sample Type: Human Fetal Brain Antibody Dilution: 1.0ug/ml