



[Go to Product page](#)

Datasheet for ABIN2783879

anti-C16orf58 antibody (N-Term)

2 Images

1 Publication

Overview

Quantity:	100 µL
Target:	C16orf58
Binding Specificity:	N-Term
Reactivity:	Human, Mouse, Cow, Dog, Guinea Pig, Horse, Rabbit, Rat
Host:	Rabbit
Clonality:	Polyclonal
Conjugate:	This C16orf58 antibody is un-conjugated
Application:	Western Blotting (WB), Immunohistochemistry (IHC)

Product Details

Immunogen:	The immunogen is a synthetic peptide directed towards the N terminal region of human C16orf58
Sequence:	QAVFLPQGFP DSVSPDYLPY QLWDSVQAFA SSLSGSLATQ AVLLGIGVGN
Predicted Reactivity:	Cow: 100%, Dog: 100%, Guinea Pig: 100%, Horse: 100%, Human: 100%, Mouse: 100%, Rabbit: 93%, Rat: 93%
Characteristics:	This is a rabbit polyclonal antibody against C16orf58. It was validated on Western Blot using a cell lysate as a positive control.
Purification:	Affinity Purified

Target Details

Target:	C16orf58
---------	----------

Target Details

Alternative Name:	C16orf58 (C16orf58 Products)
Background:	The exact function of C16orf58 remains unknown. Alias Symbols: FLJ13868 Protein Interaction Partner: UBC, Protein Size: 468
Molecular Weight:	51 kDa
Gene ID:	64755
NCBI Accession:	NM_022744 , NP_073581
UniProt:	Q96GQ5

Application Details

Application Notes:	Optimal working dilutions should be determined experimentally by the investigator.
Comment:	Antigen size: 468 AA
Restrictions:	For Research Use only

Handling

Format:	Liquid
Concentration:	Lot specific
Buffer:	Liquid. Purified antibody supplied in 1x PBS buffer with 0.09 % (w/v) sodium azide and 2 % sucrose.
Preservative:	Sodium azide
Precaution of Use:	This product contains Sodium azide: a POISONOUS AND HAZARDOUS SUBSTANCE which should be handled by trained staff only.
Handling Advice:	Avoid repeated freeze-thaw cycles.
Storage:	-20 °C
Storage Comment:	For short term use, store at 2-8°C up to 1 week. For long term storage, store at -20°C in small aliquots to prevent freeze-thaw cycles.

Publications

Product cited in: Clayton, Daley, MacDonald, Fernandez-Vizarra, Bottegoni, O'Neil, Major, Griffin, Zhuang,

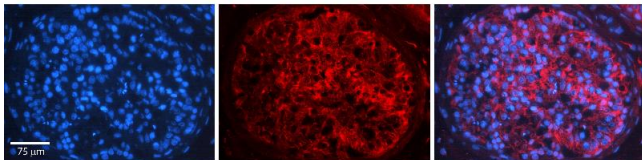
Adewoye, Woolcock, Jones, Goodyear, Elmesmari, Filer, Tennant, Alivernini, Buckley, Pitceathly et al.: "Inflammation causes remodeling of mitochondrial cytochrome c oxidase mediated by the bifunctional gene C15orf48. ..." in: **Science advances**, Vol. 7, Issue 50, pp. eabl5182, (2021) ([PubMed](#)).

Images



Western Blotting

Image 1. WB Suggested Anti-C16orf58 Antibody Titration: 0.2-1 ug/ml ELISA Titer: 1:62500 Positive Control: HepG2 cell lysate



Immunohistochemistry

Image 2. Rabbit Anti-C16ORF58 Antibody Formalin Fixed Paraffin Embedded Tissue: Human Testis Tissue Observed Staining: Plasma membrane in spermatogonia and spermatocytes Primary Antibody Concentration: 1:100 Other Working Concentrations: N/A Secondary Antibody: Donkey anti-Rabbit-Cy3 Secondary Antibody Concentration: 1:200 Magnification: 20X Exposure Time: 0.5 - 2.0 sec