

Datasheet for ABIN2783882
anti-LMF1 antibody (N-Term)[Go to Product page](#)

1 Image

Overview

Quantity:	100 µL
Target:	LMF1
Binding Specificity:	N-Term
Reactivity:	Human
Host:	Rabbit
Clonality:	Polyclonal
Conjugate:	This LMF1 antibody is un-conjugated
Application:	Western Blotting (WB)

Product Details

Immunogen:	The immunogen is a synthetic peptide directed towards the N terminal region of human LMF1
Sequence:	MRPDSPTMAA PAESLRRRKTY GYSDPEPESP PAPGRGPAGS PAHLHTGTFW
Predicted Reactivity:	Human: 100%
Characteristics:	This is a rabbit polyclonal antibody against LMF1. It was validated on Western Blot using a cell lysate as a positive control.
Purification:	Affinity Purified

Target Details

Target:	LMF1
Alternative Name:	LMF1 (LMF1 Products)

Target Details

Background: The protein encoded by this gene resides in the endoplasmic reticulum, and is involved in the maturation and transport of lipoprotein lipase through the secretory pathway. Mutations in this gene are associated with combined lipase deficiency. Alternative

Alias Symbols: C16orf26, FLJ12681, FLJ22302, HMFN1876, JFP11, TMEM112, TMEM112A

Protein Interaction Partner: PNLIP, LPL, LIPC,

Protein Size: 567

Molecular Weight: 65 kDa

Gene ID: 64788

NCBI Accession: [NM_022773](#), [NP_073610](#)

UniProt: [Q96S06](#)

Application Details

Application Notes: Optimal working dilutions should be determined experimentally by the investigator.

Comment: Antigen size: 567 AA

Restrictions: For Research Use only

Handling

Format: Liquid

Concentration: Lot specific

Buffer: Liquid. Purified antibody supplied in 1x PBS buffer with 0.09 % (w/v) sodium azide and 2 % sucrose.

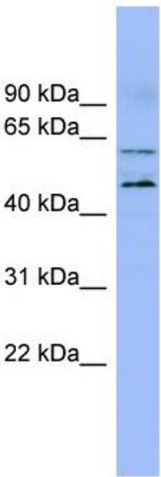
Preservative: Sodium azide

Precaution of Use: This product contains Sodium azide: a POISONOUS AND HAZARDOUS SUBSTANCE which should be handled by trained staff only.

Handling Advice: Avoid repeated freeze-thaw cycles.

Storage: -20 °C

Storage Comment: For short term use, store at 2-8°C up to 1 week. For long term storage, store at -20°C in small aliquots to prevent freeze-thaw cycles.



Western Blotting

Image 1. WB Suggested Anti-LMF1 Antibody Titration: 0.2-1 ug/ml ELISA Titer: 1:62500 Positive Control: OVCAR-3 cell lysate