

Datasheet for ABIN2783883
anti-LMF1 antibody (N-Term)[Go to Product page](#)

1 Image

Overview

Quantity:	100 µL
Target:	LMF1
Binding Specificity:	N-Term
Reactivity:	Human, Rat, Cow, Horse, Guinea Pig
Host:	Rabbit
Clonality:	Polyclonal
Conjugate:	This LMF1 antibody is un-conjugated
Application:	Western Blotting (WB)

Product Details

Immunogen:	The immunogen is a synthetic peptide directed towards the N-terminal region of human LMF1
Sequence:	LNWLTMVPSL ACFDDATLGF LFPSGPGSLK DRVLQMQRDI RGARPEPRFG
Predicted Reactivity:	Cow: 85%, Guinea Pig: 92%, Horse: 85%, Human: 100%, Rat: 92%
Characteristics:	This is a rabbit polyclonal antibody against LMF1. It was validated on Western Blot.
Purification:	Affinity Purified

Target Details

Target:	LMF1
Alternative Name:	LMF1 (LMF1 Products)
Background:	The protein encoded by this gene resides in the endoplasmic reticulum, and is involved in the

Target Details

maturation and transport of lipoprotein lipase through the secretory pathway. Mutations in this gene are associated with combined lipase deficiency. Alternatively spliced transcript variants have been found for this gene.

Alias Symbols: JFP11, TMEM112, C16orf26, HMFN1876, TMEM112A

Protein Size: 350

Molecular Weight: 38 kDa

Gene ID: 64788

NCBI Accession: [XM_011522617](#), [XP_011520919](#)

UniProt: [H3BVI4](#)

Application Details

Restrictions: For Research Use only

Handling

Format: Liquid

Concentration: 1 mg/mL

Buffer: Liquid. Purified antibody supplied in 1x PBS buffer with 0.09 % (w/v) sodium azide and 2 % sucrose.

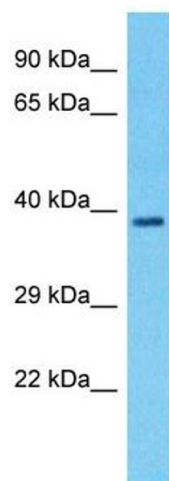
Preservative: Sodium azide

Precaution of Use: This product contains Sodium azide: a POISONOUS AND HAZARDOUS SUBSTANCE which should be handled by trained staff only.

Handling Advice: Avoid repeat freeze-thaw cycles.

Storage: -20 °C

Storage Comment: For short term use, store at 2-8°C up to 1 week. For long term storage, store at -20°C in small aliquots to prevent freeze-thaw cycles.



Western Blotting

Image 1. Host: Rabbit Target Name: LMF1 Sample Type: Lung Tumor lysates Antibody Dilution: 1.0ug/ml