



[Go to Product page](#)

Datasheet for ABIN2783893

anti-Receptor Accessory Protein 1 antibody (C-Term)

2 Images

Overview

Quantity:	100 µL
Target:	Receptor Accessory Protein 1 (REEP1)
Binding Specificity:	C-Term
Reactivity:	Mouse, Human, Rat, Horse, Rabbit, Dog, Cow, Guinea Pig
Host:	Rabbit
Clonality:	Polyclonal
Conjugate:	This Receptor Accessory Protein 1 antibody is un-conjugated
Application:	Western Blotting (WB)

Product Details

Immunogen:	The immunogen is a synthetic peptide directed towards the C terminal region of human REEP1
Sequence:	ERLRSFSMQD LTTIRGDGAP APSGPPPPGS GRASGKHGQP KMSRSASESA
Predicted Reactivity:	Cow: 92%, Dog: 86%, Guinea Pig: 92%, Horse: 100%, Human: 100%, Mouse: 100%, Rabbit: 100%, Rat: 100%
Characteristics:	This is a rabbit polyclonal antibody against REEP1. It was validated on Western Blot using a cell lysate as a positive control.
Purification:	Affinity Purified

Target Details

Target:	Receptor Accessory Protein 1 (REEP1)
---------	--------------------------------------

Target Details

Alternative Name:	REEP1 (REEP1 Products)
Background:	REEP1 belongs to the DP1 family and may enhance the cell surface expression of odorant receptors. Alias Symbols: C2orf23, FLJ13110, SPG31 Protein Interaction Partner: YWHAE, ELAVL1, Protein Size: 201
Molecular Weight:	22 kDa
Gene ID:	65055
NCBI Accession:	NM_022912 , NP_075063
UniProt:	Q9H902

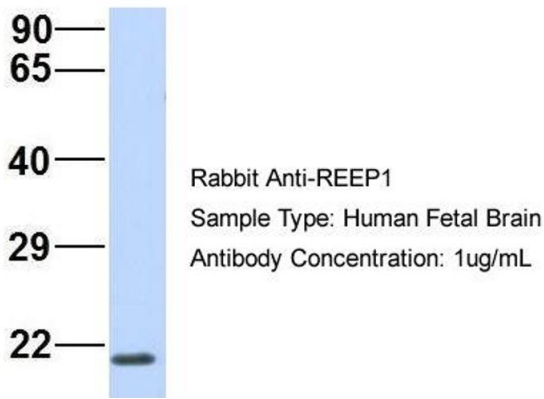
Application Details

Application Notes:	Optimal working dilutions should be determined experimentally by the investigator.
Comment:	Antigen size: 201 AA
Restrictions:	For Research Use only

Handling

Format:	Liquid
Concentration:	Lot specific
Buffer:	Liquid. Purified antibody supplied in 1x PBS buffer with 0.09 % (w/v) sodium azide and 2 % sucrose.
Preservative:	Sodium azide
Precaution of Use:	This product contains Sodium azide: a POISONOUS AND HAZARDOUS SUBSTANCE which should be handled by trained staff only.
Handling Advice:	Avoid repeated freeze-thaw cycles.
Storage:	-20 °C
Storage Comment:	For short term use, store at 2-8°C up to 1 week. For long term storage, store at -20°C in small aliquots to prevent freeze-thaw cycles.

REEP1



Western Blotting

Image 1. Host: Rabbit Target Name: REEP1 Sample Type: Human Fetal Brain Antibody Dilution: 1.0ug/ml



Western Blotting

Image 2. WB Suggested Anti-REEP1 Antibody Titration: 0.2-1 ug/ml ELISA Titer: 1:62500 Positive Control: Human Muscle