

Datasheet for ABIN2783905
anti-CYP4F12 antibody (C-Term)[Go to Product page](#)

1 Image

Overview

Quantity:	100 µL
Target:	CYP4F12
Binding Specificity:	C-Term
Reactivity:	Human, Mouse, Rat, Cow, Rabbit, Dog, Guinea Pig, Horse, Sheep
Host:	Rabbit
Clonality:	Polyclonal
Conjugate:	This CYP4F12 antibody is un-conjugated
Application:	Western Blotting (WB)

Product Details

Immunogen:	The immunogen is a synthetic peptide directed towards the C terminal region of human CYP4F12
Sequence:	TVWPDPEVYD PFRFDPENSK GRSPLAFIPF SAGPRNCIGQ AFAMAEMKVV
Predicted Reactivity:	Cow: 93%, Dog: 86%, Guinea Pig: 93%, Horse: 86%, Human: 100%, Mouse: 86%, Rabbit: 79%, Rat: 93%, Sheep: 86%
Characteristics:	This is a rabbit polyclonal antibody against CYP4F12. It was validated on Western Blot using a cell lysate as a positive control.
Purification:	Affinity Purified

Target Details

Target:	CYP4F12
---------	---------

Target Details

Alternative Name:	CYP4F12 (CYP4F12 Products)
Background:	<p>CYP4F12 is a member of the cytochrome P450 superfamily of enzymes. The cytochrome P450 proteins are monooxygenases which catalyze many reactions involved in drug metabolism and synthesis of cholesterol, steroids and other lipids. It likely localizes to the endoplasmic reticulum. When expressed in yeast the enzyme is capable of oxidizing arachidonic acid, however, its physiological function has not been determined. This gene is part of a cluster of cytochrome P450 genes on chromosome 19. Western blots using two different antibodies against two unique regions of this protein target confirm the same apparent molecular weight in our tests. This gene encodes a member of the cytochrome P450 superfamily of enzymes. The cytochrome P450 proteins are monooxygenases which catalyze many reactions involved in drug metabolism and synthesis of cholesterol, steroids and other lipids. This protein likely localizes to the endoplasmic reticulum. When expressed in yeast the enzyme is capable of oxidizing arachidonic acid, however, its physiological function has not been determined. This gene is part of a cluster of cytochrome P450 genes on chromosome 19.</p> <p>Alias Symbols: F22329_1</p> <p>Protein Interaction Partner: SOD2, HSPA6, UBC,</p> <p>Protein Size: 524</p>
Molecular Weight:	60 kDa
Gene ID:	66002
NCBI Accession:	NM_023944 , NP_076433
UniProt:	Q9HCS2
Pathways:	Monocarboxylic Acid Catabolic Process

Application Details

Application Notes:	Optimal working dilutions should be determined experimentally by the investigator.
Comment:	Antigen size: 524 AA
Restrictions:	For Research Use only

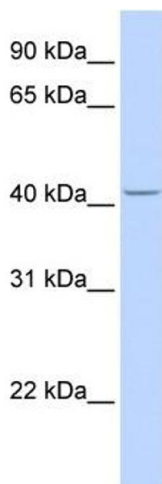
Handling

Format:	Liquid
Concentration:	Lot specific

Handling

Buffer:	Liquid. Purified antibody supplied in 1x PBS buffer with 0.09 % (w/v) sodium azide and 2 % sucrose.
Preservative:	Sodium azide
Precaution of Use:	This product contains Sodium azide: a POISONOUS AND HAZARDOUS SUBSTANCE which should be handled by trained staff only.
Handling Advice:	Avoid repeated freeze-thaw cycles.
Storage:	-20 °C
Storage Comment:	For short term use, store at 2-8°C up to 1 week. For long term storage, store at -20°C in small aliquots to prevent freeze-thaw cycles.

Images



Western Blotting

Image 1. WB Suggested Anti-CYP4F12 Antibody Titration:
0.2-1 ug/ml ELISA Titer: 1:62500 Positive Control: Human Placenta