

Datasheet for ABIN2783906
anti-YIPF2 antibody (Middle Region)[Go to Product page](#)

2 Images

Overview

Quantity:	100 µL
Target:	YIPF2
Binding Specificity:	Middle Region
Reactivity:	Human, Cow, Dog, Guinea Pig, Horse, Mouse, Rabbit, Rat
Host:	Rabbit
Clonality:	Polyclonal
Conjugate:	This YIPF2 antibody is un-conjugated
Application:	Western Blotting (WB)

Product Details

Immunogen:	The immunogen is a synthetic peptide directed towards the middle region of human YIPF2
Sequence:	LTLVLAQRRD PSIHYSPPQFH KVTVAGISYIY CYAWLVPLAL WGFLRWKGV
Predicted Reactivity:	Cow: 100%, Dog: 100%, Guinea Pig: 100%, Horse: 100%, Human: 100%, Mouse: 100%, Rabbit: 100%, Rat: 100%
Characteristics:	This is a rabbit polyclonal antibody against YIPF2. It was validated on Western Blot.
Purification:	Affinity Purified

Target Details

Target:	YIPF2
Alternative Name:	YIPF2 (YIPF2 Products)

Target Details

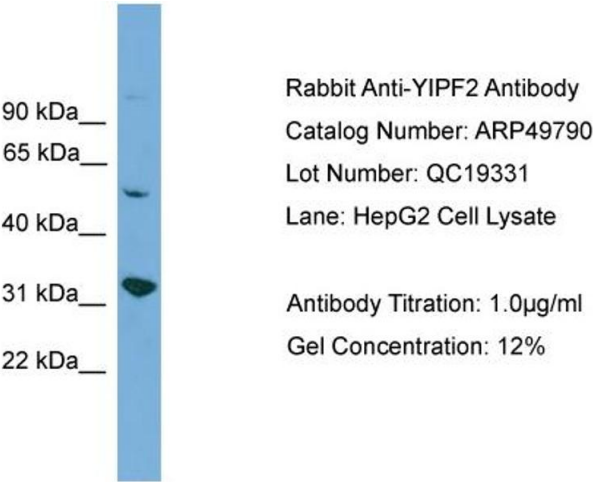
Background:	The function of YIPF2 remains unknown. Alias Symbols: FinGER2, MGC3262 Protein Interaction Partner: YIPF6, RNF185, RNF5, ELAVL1, Protein Size: 316
Molecular Weight:	35 kDa
Gene ID:	78992
NCBI Accession:	NM_024029 , NP_076934
UniProt:	Q9BWQ6

Application Details

Application Notes:	Optimal working dilutions should be determined experimentally by the investigator.
Comment:	Antigen size: 316 AA
Restrictions:	For Research Use only

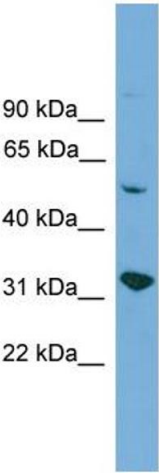
Handling

Format:	Liquid
Concentration:	Lot specific
Buffer:	Liquid. Purified antibody supplied in 1x PBS buffer with 0.09 % (w/v) sodium azide and 2 % sucrose.
Preservative:	Sodium azide
Precaution of Use:	This product contains Sodium azide: a POISONOUS AND HAZARDOUS SUBSTANCE which should be handled by trained staff only.
Handling Advice:	Avoid repeated freeze-thaw cycles.
Storage:	-20 °C
Storage Comment:	For short term use, store at 2-8°C up to 1 week. For long term storage, store at -20°C in small aliquots to prevent freeze-thaw cycles.



Western Blotting

Image 1. WB Suggested Anti-YIPF2
Antibody Titration: 0.2-1 µg/mL ELISA Titer: 1:12500
Positive Control: HepG2 cell lysate



Western Blotting

Image 2. WB Suggested Anti-YIPF2 Antibody Titration: 0.2-1 µg/ml ELISA Titer: 1:312500 Positive Control: HepG2 cell lysate