



Datasheet for ABIN2783916
anti-FAM134A antibody (N-Term)



[Go to Product page](#)

3 Images

Overview

Quantity:	100 µL
Target:	FAM134A
Binding Specificity:	N-Term
Reactivity:	Human, Mouse, Rat, Cow, Dog, Guinea Pig, Horse, Rabbit, Zebrafish (Danio rerio)
Host:	Rabbit
Clonality:	Polyclonal
Conjugate:	This FAM134A antibody is un-conjugated
Application:	Western Blotting (WB)

Product Details

Immunogen:	The immunogen is a synthetic peptide directed towards the N terminal region of human FAM134A
Sequence:	AGSGARPHLL SVPELCRYLA ESWLTFQIHL QELLQYKRQN PAQFCVRVCS
Predicted Reactivity:	Cow: 100%, Dog: 100%, Guinea Pig: 100%, Horse: 100%, Human: 100%, Mouse: 100%, Rabbit: 100%, Rat: 100%, Zebrafish: 90%
Characteristics:	This is a rabbit polyclonal antibody against FAM134A. It was validated on Western Blot using a cell lysate as a positive control.
Purification:	Affinity Purified

Target Details

Target:	FAM134A
---------	---------

Target Details

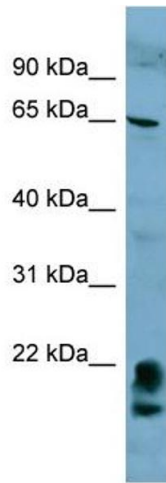
Alternative Name:	FAM134A (FAM134A Products)
Background:	The function of this protein remains unknown. Alias Symbols: C2orf17, DKFZp686C2379, MGC3035 Protein Interaction Partner: MAP1LC3B, Fam134a, KIAA1377, CHD3, Protein Size: 543
Molecular Weight:	58 kDa
Gene ID:	79137
NCBI Accession:	NM_024293 , NP_077269
UniProt:	Q8NC44

Application Details

Application Notes:	Optimal working dilutions should be determined experimentally by the investigator.
Comment:	Antigen size: 543 AA
Restrictions:	For Research Use only

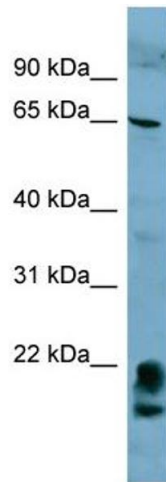
Handling

Format:	Liquid
Concentration:	Lot specific
Buffer:	Liquid. Purified antibody supplied in 1x PBS buffer with 0.09 % (w/v) sodium azide and 2 % sucrose.
Preservative:	Sodium azide
Precaution of Use:	This product contains Sodium azide: a POISONOUS AND HAZARDOUS SUBSTANCE which should be handled by trained staff only.
Handling Advice:	Avoid repeated freeze-thaw cycles.
Storage:	-20 °C
Storage Comment:	For short term use, store at 2-8°C up to 1 week. For long term storage, store at -20°C in small aliquots to prevent freeze-thaw cycles.



Western Blotting

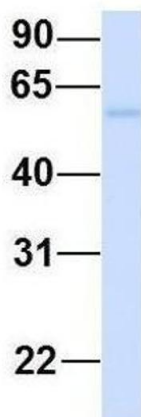
Image 1. WB Suggested Anti-FAM134A Antibody Titration: 0.2-1 ug/ml ELISA Titer: 1:312500 Positive Control: HT1080 cell lysate There is BioGPS gene expression data showing that FAM134A is expressed in HT1080



Western Blotting

Image 2. WB Suggested Anti-FAM134A Antibody Titration: 0.2-1 µg/mL ELISA Titer: 1:12500 Positive Control: HT1080 cell lysate There is BioGPS gene expression data showing that FAM134A is expressed in HT1080

FAM134A



Western Blotting

Image 3. Host: Rabbit Target Name: FAM134A Sample Type: Human Fetal Heart Antibody Dilution: 1.0ug/ml