

Datasheet for ABIN2783935

**anti-IGF-like family receptor 1 (IGFLR1) (N-Term) antibody**[Go to Product page](#)**1** Image

## Overview

Quantity:	100 µL
Target:	IGF-like family receptor 1 (IGFLR1)
Binding Specificity:	N-Term
Reactivity:	Human
Host:	Rabbit
Clonality:	Polyclonal
Conjugate:	Un-conjugated
Application:	Western Blotting (WB)

## Product Details

Immunogen:	The immunogen is a synthetic peptide directed towards the N terminal region of human TMEM149
Sequence:	WRCRERPVPA KGHCLPTPGN PGAPSSQERS SPASSIAWRT PEPVPQQAWP
Predicted Reactivity:	Human: 100%
Characteristics:	This is a rabbit polyclonal antibody against TMEM149. It was validated on Western Blot using a cell lysate as a positive control.
Purification:	Affinity Purified

## Target Details

Target:	IGF-like family receptor 1 (IGFLR1)
---------	-------------------------------------

## Target Details

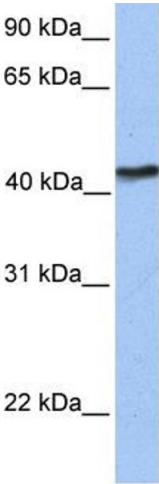
Alternative Name:	TMEM149 ( <a href="#">IGFLR1 Products</a> )
Background:	TMEM149 is a single-pass type I membrane protein. The exact function of TMEM149 remains unknown.  Alias Symbols: FLJ22573, U2AF1L4, TMEM149  Protein Size: 355
Molecular Weight:	38 kDa
Gene ID:	79713
NCBI Accession:	<a href="#">NM_024660</a> , <a href="#">NP_078936</a>
UniProt:	<a href="#">Q9H665</a>

## Application Details

Application Notes:	Optimal working dilutions should be determined experimentally by the investigator.
Comment:	Antigen size: 355 AA
Restrictions:	For Research Use only

## Handling

Format:	Liquid
Concentration:	Lot specific
Buffer:	Liquid. Purified antibody supplied in 1x PBS buffer with 0.09 % (w/v) sodium azide and 2 % sucrose.
Preservative:	Sodium azide
Precaution of Use:	This product contains Sodium azide: a POISONOUS AND HAZARDOUS SUBSTANCE which should be handled by trained staff only.
Handling Advice:	Avoid repeated freeze-thaw cycles.
Storage:	-20 °C
Storage Comment:	For short term use, store at 2-8°C up to 1 week. For long term storage, store at -20°C in small aliquots to prevent freeze-thaw cycles.



Western Blotting

**Image 1.** WB Suggested Anti-TMEM149 Antibody Titration:  
0.2-1 ug/ml Positive Control: Human brain