



Datasheet for ABIN2783944
anti-ZDHHC11B antibody (N-Term)



[Go to Product page](#)

1 Image

Overview

Quantity:	100 µL
Target:	ZDHHC11B
Binding Specificity:	N-Term
Reactivity:	Human
Host:	Rabbit
Clonality:	Polyclonal
Conjugate:	This ZDHHC11B antibody is un-conjugated
Application:	Western Blotting (WB)

Product Details

Immunogen:	The immunogen is a synthetic peptide directed towards the N-terminal region of human ZDHHC11B
Sequence:	MDTRSGSQCS VTPEAIRNNE ELVLPPRISR VNGWSLPLHY FRVVTWAVFV
Predicted Reactivity:	Human: 100%
Characteristics:	This is a rabbit polyclonal antibody against ZDHHC11B. It was validated on Western Blot.
Purification:	Affinity Purified

Target Details

Target:	ZDHHC11B
Alternative Name:	ZDHHC11B (ZDHHC11B Products)

Target Details

Background: The function of this protein remains unknown.
Protein Size: 371

Molecular Weight: 40 kDa

UniProt: [P0C7U3](#)

Application Details

Application Notes: Optimal working dilution should be determined by the investigator.

Restrictions: For Research Use only

Handling

Format: Liquid

Concentration: 1 mg/mL

Buffer: Liquid. Purified antibody supplied in 1x PBS buffer with 0.09 % (w/v) sodium azide and 2 % sucrose.

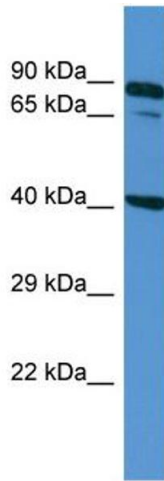
Preservative: Sodium azide

Precaution of Use: This product contains Sodium azide: a POISONOUS AND HAZARDOUS SUBSTANCE which should be handled by trained staff only.

Handling Advice: Avoid repeat freeze-thaw cycles.

Storage: -20 °C

Storage Comment: For short term use, store at 2-8°C up to 1 week. For long term storage, store at -20°C in small aliquots to prevent freeze-thaw cycles.



Western Blotting

Image 1. Host: Rabbit Target Name: ZDHHC11B Sample Type: NCI-H226 Whole cell lysates Antibody Dilution: 1.0ug/ml