



[Go to Product page](#)

Datasheet for ABIN2783946  
**anti-TMEM180 antibody (Middle Region)**

2 Images

Overview

Quantity:	100 µL
Target:	TMEM180
Binding Specificity:	Middle Region
Reactivity:	Human, Mouse, Rabbit, Rat, Cow, Dog, Guinea Pig, Horse
Host:	Rabbit
Clonality:	Polyclonal
Conjugate:	This TMEM180 antibody is un-conjugated
Application:	Western Blotting (WB)

Product Details

Immunogen:	The immunogen is a synthetic peptide directed towards the middle region of human TMEM180
Sequence:	CLFIASNRVF TEGTCKLLTL VVTDLVDEDL VLNHRKQAAS ALLFGMVALV T
Predicted Reactivity:	Cow: 100%, Dog: 100%, Guinea Pig: 100%, Horse: 100%, Human: 100%, Mouse: 100%, Rabbit: 100%, Rat: 100%
Characteristics:	This is a rabbit polyclonal antibody against TMEM180. It was validated on Western Blot.
Purification:	Affinity Purified

Target Details

Target:	TMEM180
Alternative Name:	TMEM180 ( <a href="#">TMEM180 Products</a> )

## Target Details

---

Background: The function of TMEM180 remains unknown.  
Alias Symbols: C10orf77, FLJ22529, bA18I14.8, RP11-18I14.8  
Protein Interaction Partner: APP, ELAVL1, UBC,  
Protein Size: 517

---

Molecular Weight: 57 kDa

---

Gene ID: 79847

---

NCBI Accession: [NM\\_024789](#), [NP\\_079065](#)

---

UniProt: [Q14CX5](#)

---

## Application Details

---

Application Notes: Optimal working dilutions should be determined experimentally by the investigator.

---

Comment: Antigen size: 517 AA

---

Restrictions: For Research Use only

---

## Handling

---

Format: Liquid

---

Concentration: Lot specific

---

Buffer: Liquid. Purified antibody supplied in 1x PBS buffer with 0.09 % (w/v) sodium azide and 2 % sucrose.

---

Preservative: Sodium azide

---

Precaution of Use: This product contains Sodium azide: a POISONOUS AND HAZARDOUS SUBSTANCE which should be handled by trained staff only.

---

Handling Advice: Avoid repeated freeze-thaw cycles.

---

Storage: -20 °C

---

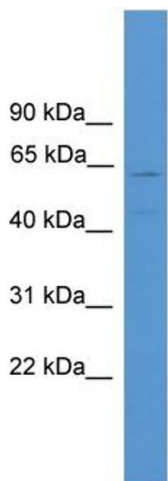
Storage Comment: For short term use, store at 2-8°C up to 1 week. For long term storage, store at -20°C in small aliquots to prevent freeze-thaw cycles.

---



### Western Blotting

**Image 1.** WB Suggested Anti-TMEM180 Antibody Titration: 0.2-1 ug/ml ELISA Titer: 1:312500 Positive Control: THP-1 cell lysate



Rabbit Anti-TMEM180 Antibody  
Catalog Number: ARP49872  
Lot Number: QC29784  
Lane: THP-1 Cell Lysate

Antibody Titration: 1.0µg/ml  
Gel Concentration: 12%

### Western Blotting

**Image 2.** WB Suggested Anti-TMEM180 Antibody Titration: 0.2-1 µg/mL ELISA Titer: 1:12500 Positive Control: THP-1 cell lysate