

Datasheet for ABIN2783947  
**anti-TM4SF20 antibody (Middle Region)**[Go to Product page](#)

## 1 Image

## Overview

Quantity:	100 µL
Target:	TM4SF20
Binding Specificity:	Middle Region
Reactivity:	Human, Dog, Rabbit, Rat
Host:	Rabbit
Clonality:	Polyclonal
Conjugate:	This TM4SF20 antibody is un-conjugated
Application:	Western Blotting (WB)

## Product Details

Immunogen:	The immunogen is a synthetic peptide directed towards the middle region of human TM4SF20
Sequence:	QALLKGPLMC NSPSNSNANC EFSLKNISDI HPESFNLQWF FNDSCAPPTG
Predicted Reactivity:	Dog: 77%, Human: 100%, Rabbit: 83%, Rat: 83%
Characteristics:	This is a rabbit polyclonal antibody against TM4SF20. It was validated on Western Blot using a cell lysate as a positive control.
Purification:	Affinity Purified

## Target Details

Target:	TM4SF20
Alternative Name:	TM4SF20 ( <a href="#">TM4SF20 Products</a> )

## Target Details

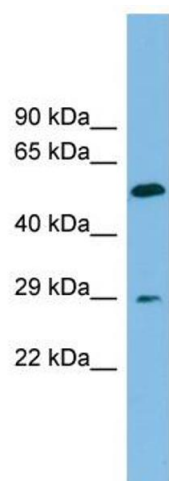
Background:	The function of this protein remains unknown. Alias Symbols: FLJ22800, PRO994, TCCE518 Protein Size: 229
Molecular Weight:	25 kDa
Gene ID:	79853
NCBI Accession:	<a href="#">NM_024795</a> , <a href="#">NP_079071</a>
UniProt:	<a href="#">Q53R12</a>

## Application Details

Application Notes:	Optimal working dilutions should be determined experimentally by the investigator.
Comment:	Antigen size: 229 AA
Restrictions:	For Research Use only

## Handling

Format:	Liquid
Concentration:	Lot specific
Buffer:	Liquid. Purified antibody supplied in 1x PBS buffer with 0.09 % (w/v) sodium azide and 2 % sucrose.
Preservative:	Sodium azide
Precaution of Use:	This product contains Sodium azide: a POISONOUS AND HAZARDOUS SUBSTANCE which should be handled by trained staff only.
Handling Advice:	Avoid repeated freeze-thaw cycles.
Storage:	-20 °C
Storage Comment:	For short term use, store at 2-8°C up to 1 week. For long term storage, store at -20°C in small aliquots to prevent freeze-thaw cycles.



Western Blotting

**Image 1.** WB Suggested Anti-TM4SF20 Antibody Titration:  
0.2-1 ug/ml ELISA Titer: 1:1562500 Positive Control:  
HT1080 cell lysate