

Datasheet for ABIN2783948  
**anti-TREML2 antibody (N-Term)**[Go to Product page](#)

## 2 Images

## Overview

Quantity:	100 µL
Target:	TREML2
Binding Specificity:	N-Term
Reactivity:	Human, Dog, Pig, Rabbit, Cow, Horse, Rat
Host:	Rabbit
Clonality:	Polyclonal
Conjugate:	This TREML2 antibody is un-conjugated
Application:	Western Blotting (WB)

## Product Details

Immunogen:	The immunogen is a synthetic peptide directed towards the N terminal region of human TREML2
Sequence:	GRYWCMRNTS GILYPLMGFQ LDVSPAPQTE RNIPFTHLDN ILKSGTVTTG
Predicted Reactivity:	Cow: 92%, Dog: 77%, Horse: 92%, Human: 100%, Pig: 85%, Rabbit: 86%, Rat: 77%
Characteristics:	This is a rabbit polyclonal antibody against TREML2. It was validated on Western Blot.
Purification:	Affinity Purified

## Target Details

Target:	TREML2
Alternative Name:	TREML2 ( <a href="#">TREML2 Products</a> )

## Target Details

**Background:** TREML2 is a single-pass type I membrane protein, and it contains 1 Ig-like V-type (immunoglobulin-like) domain. TREML2 is a cell surface receptor that may play a role in the innate and adaptive immune response.

Alias Symbols: C6orf76, FLJ13693, MGC149715, MGC149716, TLT2, dJ238023.1, TLT-2

Protein Size: 380

**Molecular Weight:** 41 kDa

**Gene ID:** 79865

**NCBI Accession:** [NM\\_024807](#), [NP\\_079083](#)

**UniProt:** [Q5T2D2](#)

## Application Details

**Application Notes:** Optimal working dilutions should be determined experimentally by the investigator.

**Comment:** Antigen size: 380 AA

**Restrictions:** For Research Use only

## Handling

**Format:** Liquid

**Concentration:** Lot specific

**Buffer:** Liquid. Purified antibody supplied in 1x PBS buffer with 0.09 % (w/v) sodium azide and 2 % sucrose.

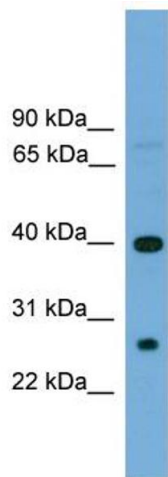
**Preservative:** Sodium azide

**Precaution of Use:** This product contains Sodium azide: a POISONOUS AND HAZARDOUS SUBSTANCE which should be handled by trained staff only.

**Handling Advice:** Avoid repeated freeze-thaw cycles.

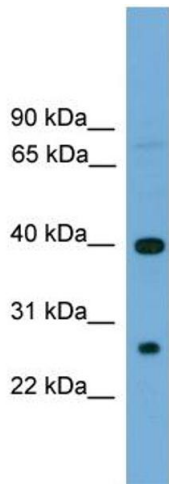
**Storage:** -20 °C

**Storage Comment:** For short term use, store at 2-8°C up to 1 week. For long term storage, store at -20°C in small aliquots to prevent freeze-thaw cycles.



**Western Blotting**

**Image 1.** WB Suggested Anti-TREML2 Antibody Titration: 0.2-1 ug/ml ELISA Titer: 1:312500 Positive Control: Hela cell lysate



Rabbit Anti-TREML2 Antibody  
Catalog Number: ARP49877  
Lot Number: QC29786  
Lane: Hela Cell Lysate

Antibody Titration: 1.0µg/ml  
Gel Concentration: 12%

**Western Blotting**

**Image 2.** WB Suggested Anti-TREML2 Antibody Titration: 0.2-1 µg/mL ELISA Titer: 1::12500 Positive Control: Hela cell lysate