



Datasheet for ABIN2783949
anti-TREML2 antibody (Middle Region)



[Go to Product page](#)

1 Image

Overview

Quantity:	100 µL
Target:	TREML2
Binding Specificity:	Middle Region
Reactivity:	Human, Dog
Host:	Rabbit
Clonality:	Polyclonal
Conjugate:	This TREML2 antibody is un-conjugated
Application:	Western Blotting (WB)

Product Details

Immunogen:	The immunogen is a synthetic peptide directed towards the middle region of human TREML2
Sequence:	TGYSFTATST TSQGPVRTMG SQTVTASPSN ARDSSAGPES ISTKSGDLST
Predicted Reactivity:	Dog: 79%, Human: 100%
Characteristics:	This is a rabbit polyclonal antibody against TREML2. It was validated on Western Blot using a cell lysate as a positive control.
Purification:	Affinity Purified

Target Details

Target:	TREML2
Alternative Name:	TREML2 (TREML2 Products)

Target Details

Background: TREML2 is a single-pass type I membrane protein, and it contains 1 Ig-like V-type (immunoglobulin-like) domain. TREML2 is a cell surface receptor that may play a role in the innate and adaptive immune response. TREML2 is located in a gene cluster on chromosome 6 with the single Ig variable (IgV) domain activating receptors TREM1 (MIM 605085) and TREM2 (MIM 605086), but it has distinct structural and functional properties (Allcock et al., 2003 [PubMed 12645956]).[supplied by OMIM]. Sequence Note: This RefSeq record was created from transcript and genomic sequence data because no single transcript was available for the full length of the gene. The extent of this transcript is supported by transcript alignments.
PRIMARYREFSEQ_SPAN PRIMARY_IDENTIFIER PRIMARY_SPAN COMP 1-1294 AY358171.1 2-1295 1295-3758 AL133404.8 7920-10383
Alias Symbols: C6orf76, FLJ13693, MGC149715, MGC149716, TLT2, dJ238023.1, TLT-2
Protein Size: 380

Molecular Weight: 41 kDa

Gene ID: 79865

NCBI Accession: [NM_024807](#), [NP_079083](#)

UniProt: [Q5T2D2](#)

Application Details

Application Notes: Optimal working dilutions should be determined experimentally by the investigator.

Comment: Antigen size: 380 AA

Restrictions: For Research Use only

Handling

Format: Liquid

Concentration: Lot specific

Buffer: Liquid. Purified antibody supplied in 1x PBS buffer with 0.09 % (w/v) sodium azide and 2 % sucrose.

Preservative: Sodium azide

Precaution of Use: This product contains Sodium azide: a POISONOUS AND HAZARDOUS SUBSTANCE which should be handled by trained staff only.

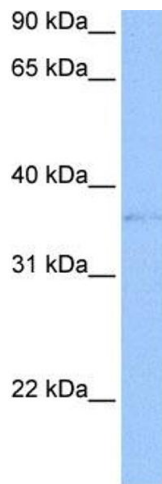
Handling Advice: Avoid repeated freeze-thaw cycles.

Handling

Storage: -20 °C

Storage Comment: For short term use, store at 2-8°C up to 1 week. For long term storage, store at -20°C in small aliquots to prevent freeze-thaw cycles.

Images



Western Blotting

Image 1. WB Suggested Anti-TREML2 Antibody Titration: 0.2-1 ug/ml Positive Control: 721_B cell lysate TREML2 is supported by BioGPS gene expression data to be expressed in 721_B