

Datasheet for ABIN2783957  
**anti-LPPR3 antibody (Middle Region)**[Go to Product page](#)

## 1 Image

## Overview

Quantity:	100 µL
Target:	LPPR3
Binding Specificity:	Middle Region
Reactivity:	Human, Rat, Mouse, Pig, Dog, Horse, Guinea Pig
Host:	Rabbit
Clonality:	Polyclonal
Conjugate:	This LPPR3 antibody is un-conjugated
Application:	Western Blotting (WB)

## Product Details

Immunogen:	The immunogen is a synthetic peptide directed towards the middle region of Human LPPR3
Sequence:	APGPKAAETA SSSSASSDSS QYRSPSDRDS ASIVTIDAH PHHPVVHLSA
Predicted Reactivity:	Dog: 100%, Guinea Pig: 93%, Horse: 100%, Human: 100%, Mouse: 100%, Pig: 100%, Rat: 100%
Characteristics:	This is a rabbit polyclonal antibody against LPPR3. It was validated on Western Blot.
Purification:	Affinity Purified

## Target Details

Target:	LPPR3
Alternative Name:	LPPR3 ( <a href="#">LPPR3 Products</a> )
Background:	The proteins in the lipid phosphate phosphatase (LPP) family, including PRG2, are integral

## Target Details

membrane proteins that modulate bioactive lipid phosphates including phosphatidate, lysophosphatidate, and sphingosine-1-phosphate in the context of cell migration, neurite retraction, and mitogenesis.

Protein Interaction Partner: UBC, STRN4, BAG6,

Protein Size: 326

Molecular Weight: 35 kDa

Gene ID: 79948

## Application Details

Restrictions: For Research Use only

## Handling

Format: Liquid

Concentration: 1 mg/mL

Buffer: Liquid. Purified antibody supplied in 1x PBS buffer with 0.09 % (w/v) sodium azide and 2 % sucrose.

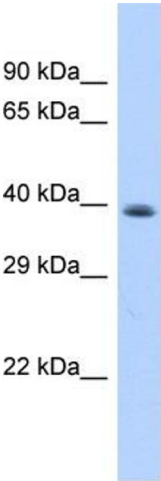
Preservative: Sodium azide

Precaution of Use: This product contains Sodium azide: a POISONOUS AND HAZARDOUS SUBSTANCE which should be handled by trained staff only.

Handling Advice: Avoid repeat freeze-thaw cycles.

Storage: -20 °C

Storage Comment: For short term use, store at 2-8°C up to 1 week. For long term storage, store at -20°C in small aliquots to prevent freeze-thaw cycles.



Host: Rabbit  
Target Name: LPPR3  
Sample Tissue: Hela Cell Lysate  
Antibody Dilution: 1.0µg/ml

**Western Blotting**

**Image 1.** Host: Rabbit Target Name: LPPR3 Sample Type: Hela Whole Cell lysates Antibody Dilution: 1.0ug/ml